



**PRINCE SHRI VENKATESWARA ARTS AND SCIENCE COLLEGE**

Gowrivaldkam, Chennai-600073.

Affiliated to University of Madras

**STUDENT FEEDBACK ON CURRICULUM, INFRASTRUCTURE FACILITIES & AMBIENCE OF THE INSTITUTION – ANALYSIS REPORT**

**Academic Year** 2018-19  
**Department** B.Sc. Biochemistry  
**Number of Respondents** 48

Feedback Rate: Strongly Agree (5), Agree (4), Neutral (3), Disagree (2), Strongly Disagree (1)

| S. No | Feedback on Curriculum, infrastructure facilities & ambience of the institution   | 5  | 4  | 3 | 2 | 1 |
|-------|---|----|----|---|---|---|
| 1     | Rate the courses in terms of their relevance to the latest and/ or future technologies and useful for employability (Related to Curriculum) | 25 | 21 | 2 | 0 | 0 |
| 2     | Rate the quality and relevance of the courses included in the curriculum (Related to Curriculum)  | 22 | 20 | 5 | 0 | 1 |
| 3     | Rate the opportunity for students to participate in internship, contest, field visit, IPT and conference (Related to Curriculum)            | 23 | 22 | 3 | 0 | 0 |
| 4     | Rate the quality of teaching and teacher's approach in the entire program (Related to Curriculum)   | 25 | 21 | 2 | 0 | 0 |
| 5     | Rate the infrastructure of the classrooms for effective learning (Related to Curriculum)  | 26 | 21 | 1 | 0 | 0 |
| 6     | Rate the usage of teaching aids and ICT in the class by faculty to facilitate teaching (Related to Curriculum)                              | 22 | 24 | 2 | 0 | 0 |
| 7     | Rate the opportunity for students to participate in extension activities (Related to Curriculum)  | 24 | 20 | 3 | 1 | 0 |

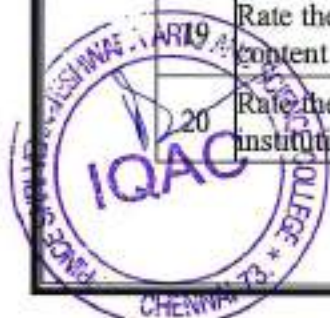


## PRINCE SHRI VENKATESWARA ARTS AND SCIENCE COLLEGE

Gowrivakkam, Chennai-600073.

Affiliated to University of Madras

|    |   |    |    |   |   |   |
|----|---|----|----|---|---|---|
| 8  | Rate the opportunities provided to utilize Research facilities & assistance to prepare for Hackathons and other technical challenges (Related to Curriculum)                                  | 28 | 19 | 1 | 0 | 0 |
| 9  | Rate the way of Grievances/problems are redressed and resolved in time. (Related to Curriculum)   | 22 | 24 | 1 | 1 | 0 |
| 10 | Rate the functioning of Placement Cell in getting jobs and placements (Related to Curriculum)   | 23 | 21 | 2 | 1 | 1 |
| 11 | Rate the transparency of the evaluation system in the College and the internal evaluation process by the teachers (Related to Assessment)   | 23 | 22 | 2 | 1 | 0 |
| 12 | Rate the PSVASC contributions on Entrepreneurship Development (Related to Ambience)   | 25 | 19 | 3 | 1 | 0 |
| 13 | Rate the learning environment with adequate resources in Library (Related to Infrastructure)  | 24 | 20 | 3 | 1 | 0 |
| 14 | Rate the laboratories & other IT facilities are excellent for effective learning (Related to Infrastructure and ambience of the institution)  | 22 | 21 | 4 | 0 | 1 |
| 15 | Rate the infrastructure, cleanliness and other facilities in campus / canteen / common room / toilets / washrooms and maintenance (Related to Infrastructure and ambience of the institution) | 22 | 23 | 2 | 1 | 0 |
| 16 | Rate the sports (Indoor/Outdoor) facilities available and its maintenance (Related to Infrastructure and ambience of the institution)   | 23 | 21 | 3 | 1 | 0 |
| 17 | Rate the security and proctorial services in college for students. (Related to Infrastructure and ambience of the institution)  | 22 | 20 | 4 | 1 | 1 |
| 18 | Rate the resources and practices for conservation of energy, water, etc. in the campus (Related to Infrastructure and ambience of the institution)  | 23 | 23 | 2 | 0 | 0 |
|    | Rate the usage of modern teaching aids, Gadget, Smart class room and Web resources for content delivery (Related to Infrastructure and ambience of the institution)                           | 24 | 21 | 2 | 1 | 0 |
|    | Rate the consistent maintenance of green campus (Related to Infrastructure and ambience of the institution)   | 24 | 23 | 1 | 0 | 0 |



*B. Kalpana*  
**PRINCIPAL**

**PRINCE SHRI VENKATESHWARA  
ARTS AND SCIENCE COLLEGE**

GOWRIVAKKAM, CHENNAI-600 073.



**PRINCE SHRI VENKATESWARA ARTS AND SCIENCE COLLEGE**

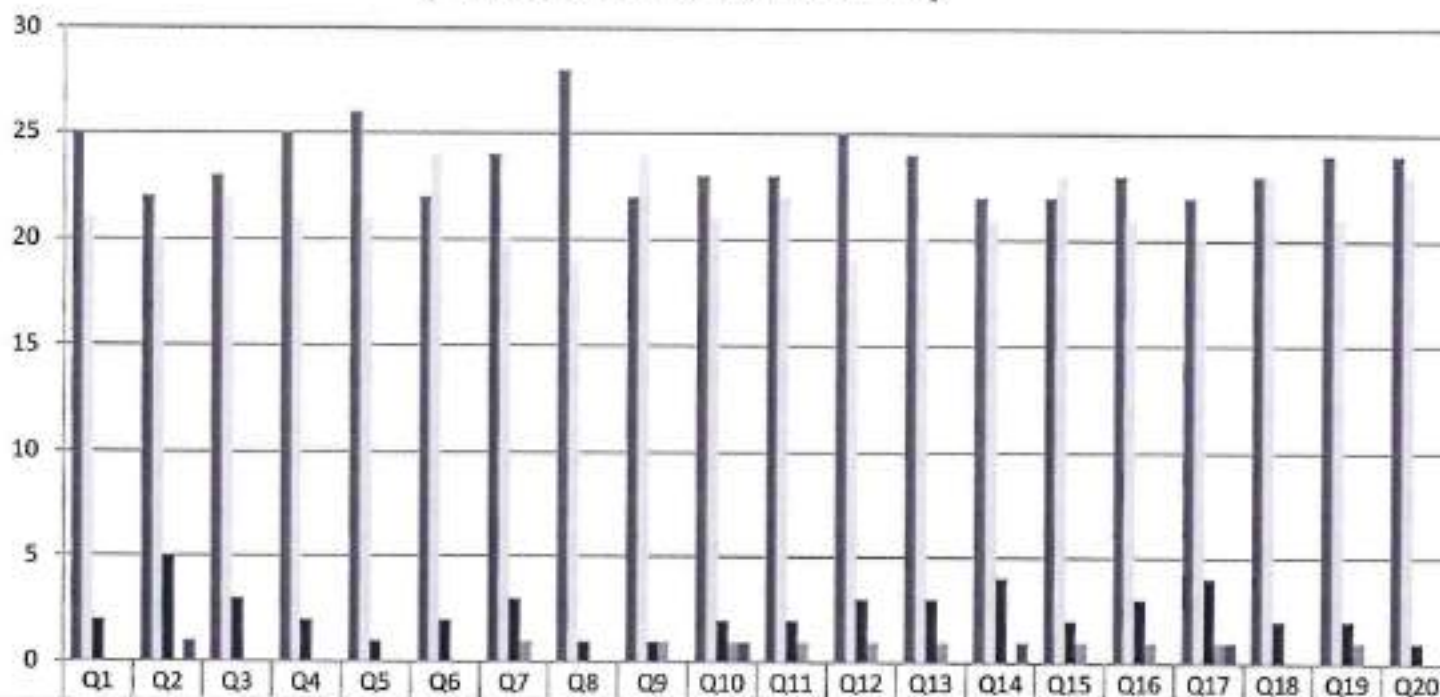
Gowrivakkam, Chennai-600073.

Affiliated to University of Madras

**STUDENT FEEDBACK ON CURRICULUM, INFRASTRUCTURE FACILITIES & AMBIENCE OF THE INSTITUTION - 2018-2019**

**B.Sc. BIOCHEMISTRY**

(NUMBER OF RESPONDENTS - 48)



*B. Kalpana*  
**PRINCIPAL**  
 PRINCE SHRI VENKATESHWARA  
 ARTS AND SCIENCE COLLEGE  
 GOWRIVAKKAM, CHENNAI-600073.



## PRINCE SHRI VENKATESWARA ARTS AND SCIENCE COLLEGE

Gowrivalckam, Chennai-600073.

Affiliated to University of Madras

### STUDENT FEEDBACK ON CURRICULUM, INFRASTRUCTURE FACILITIES & AMBIENCE OF THE INSTITUTION – ANALYSIS REPORT

**Academic Year** 2018-19  
**Department** B.Sc.-Microbiology  
**Number of Respondents** 70

Feedback Rate: Strongly Agree (5), Agree (4), Neutral (3), Disagree (2), Strongly Disagree (1)

| S. No | Feedback on Curriculum, infrastructure facilities & ambience of the institution  | 5  | 4  | 3 | 2 | 1 |
|-------|--|----|----|---|---|---|
| 1     | Rate the courses in terms of their relevance to the latest and/ or future technologies and useful for employability (Related to Curriculum)                  | 34 | 32 | 4 | 0 | 0 |
| 2     | Rate the quality and relevance of the courses included in the curriculum (Related to Curriculum)   | 37 | 30 | 3 | 0 | 0 |
| 3     | Rate the opportunity for students to participate in internship, contest, field visit, IPT and conference (Related to Curriculum)                             | 34 | 32 | 4 | 0 | 0 |
| 4     | Rate the quality of teaching and teacher's approach in the entire program (Related to Curriculum)  | 36 | 30 | 3 | 1 | 0 |
| 5     | Rate the infrastructure of the classrooms for effective learning (Related to Curriculum)   | 34 | 32 | 3 | 0 | 1 |
| 6     | Rate the usage of teaching aids and ICT in the class by faculty to facilitate teaching (Related to Curriculum)   | 37 | 29 | 4 | 0 | 0 |
| 7     | Rate the opportunity for students to participate in extension activities (Related to Curriculum)   | 34 | 32 | 3 | 1 | 0 |
| 8     | Rate the opportunities provided to utilize Research facilities & assistance to prepare for Hackathons and other technical challenges (Related to Curriculum) | 35 | 30 | 4 | 0 | 1 |



## PRINCE SHRI VENKATESWARA ARTS AND SCIENCE COLLEGE

Gowrivakkam, Chennai-600073.

Affiliated to University of Madras

|    |   |    |    |   |   |   |
|----|---|----|----|---|---|---|
| 9  | Rate the way of Grievances/problems are redressed and resolved in time. (Related to Curriculum)   | 38 | 30 | 1 | 1 | 0 |
| 10 | Rate the functioning of Placement Cell in getting jobs and placements (Related to Curriculum)   | 35 | 31 | 2 | 1 | 1 |
| 11 | Rate the transparency of the evaluation system in the College and the internal evaluation process by the teachers (Related to Assessment)   | 36 | 32 | 1 | 1 | 0 |
| 12 | Rate the PSVASC contributions on Entrepreneurship Development (Related to Ambience)   | 35 | 30 | 4 | 1 | 0 |
| 13 | Rate the learning environment with adequate resources in Library (Related to Infrastructure)  | 37 | 29 | 3 | 1 | 0 |
| 14 | Rate the laboratories & other IT facilities are excellent for effective learning (Related to Infrastructure and ambience of the institution)  | 31 | 32 | 4 | 2 | 1 |
| 15 | Rate the infrastructure, cleanliness and other facilities in campus / canteen / common room / toilets / washrooms and maintenance (Related to Infrastructure and ambience of the institution) | 34 | 34 | 1 | 1 | 0 |
| 16 | Rate the sports (Indoor/Outdoor) facilities available and its maintenance (Related to Infrastructure and ambience of the institution)   | 34 | 31 | 4 | 1 | 0 |
| 17 | Rate the security and proctorial services in college for students. (Related to Infrastructure and ambience of the institution)  | 33 | 32 | 3 | 1 | 1 |
| 18 | Rate the resources and practices for conservation of energy, water, etc. in the campus (Related to Infrastructure and ambience of the institution)  | 36 | 29 | 2 | 2 | 1 |
| 19 | Rate the usage of modern teaching aids, Gadget, Smart class room and Web resources for content delivery (Related to Infrastructure and ambience of the institution)                           | 35 | 32 | 2 | 1 | 0 |
| 20 | Rate the consistent maintenance of green campus (Related to Infrastructure and ambience of the institution)   | 38 | 31 | 1 | 0 | 0 |

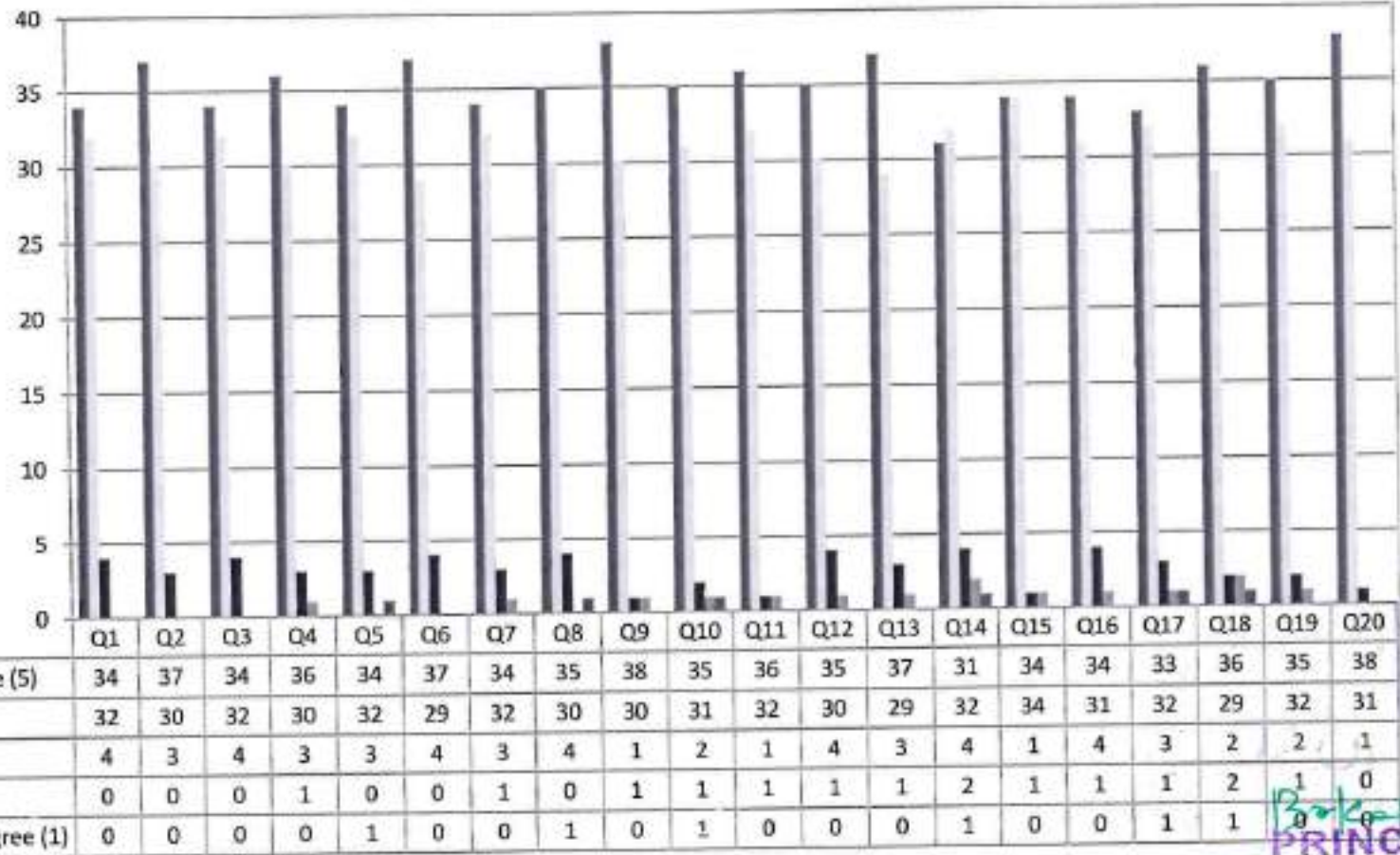


*B. Kalpane*  
**PRINCIPAL**  
PRINCE SHRI VENKATESHWARA  
ARTS AND SCIENCE COLLEGE  
GOWRIVAKKAM, CHENNAI-600 073.



**PRINCE SHRI VENKATESWARA ARTS AND SCIENCE COLLEGE**  
 Gowrivakkam, Chennai-600073.  
 Affiliated to University of Madras

**STUDENT FEEDBACK ON CURRICULUM, INFRASTRUCTURE  
 FACILITIES & AMBIENCE OF THE INSTITUTION - 2018-2019**  
**B.Sc. MICROBIOLOGY**  
 (NUMBER OF RESPONDENTS - 70)



*Boopalane*  
**PRINCIPAL**  
 PRINCE SHRI VENKATESHWARA  
 ARTS AND SCIENCE COLLEGE  
 GOWRIVAKKAM, CHENNAI-600 073.



**PRINCE SHRI VENKATESWARA ARTS AND SCIENCE COLLEGE**

Gowrivakkam, Chennai-600073.

Affiliated to University of Madras

**STUDENT FEEDBACK ON CURRICULUM, INFRASTRUCTURE FACILITIES & AMBIENCE OF THE INSTITUTION – ANALYSIS REPORT**

**Academic Year**

**2018-19**

**Department**

**B.Sc. Electronics and Communication Science**

**Number of Respondents**

**32**

Feedback Rate: Strongly Agree (5), Agree (4), Neutral (3), Disagree (2), Strongly Disagree (1)

| S. No | Feedback on Curriculum, infrastructure facilities & ambience of the institution  | 5  | 4  | 3 | 2 | 1 |
|-------|--|----|----|---|---|---|
| 1     | Rate the courses in terms of their relevance to the latest and/ or future technologies and useful for employability (Related to Curriculum)                  | 19 | 12 | 1 | 0 | 0 |
| 2     | Rate the quality and relevance of the courses included in the curriculum (Related to Curriculum)   | 22 | 8  | 1 | 0 | 1 |
| 3     | Rate the opportunity for students to participate in internship, contest, field visit, IPT and conference (Related to Curriculum)                             | 19 | 11 | 2 | 0 | 0 |
| 4     | Rate the quality of teaching and teacher's approach in the entire program (Related to Curriculum)  | 17 | 14 | 0 | 1 | 0 |
| 5     | Rate the infrastructure of the classrooms for effective learning (Related to Curriculum)   | 19 | 12 | 1 | 0 | 0 |
| 6     | Rate the usage of teaching aids and ICT in the class by faculty to facilitate teaching (Related to Curriculum)   | 21 | 11 | 0 | 0 | 0 |
| 7     | Rate the opportunity for students to participate in extension activities (Related to Curriculum)   | 19 | 10 | 2 | 1 | 0 |
| 8     | Rate the opportunities provided to utilize Research facilities & assistance to prepare for Hackathons and other technical challenges (Related to Curriculum) | 17 | 14 | 1 | 0 | 0 |



**PRINCE SHRI VENKATESWARA ARTS AND SCIENCE COLLEGE**

Gowrivakkam, Chennai-600073.

Affiliated to University of Madras

|    |   |    |    |   |   |   |
|----|---|----|----|---|---|---|
| 9  | Rate the way of Grievances/problems are redressed and resolved in time. (Related to Curriculum)   | 22 | 9  | 0 | 1 | 0 |
| 10 | Rate the functioning of Placement Cell in getting jobs and placements (Related to Curriculum)   | 20 | 10 | 0 | 1 | 1 |
| 11 | Rate the transparency of the evaluation system in the College and the internal evaluation process by the teachers (Related to Assessment)   | 20 | 11 | 0 | 1 | 0 |
| 12 | Rate the PSVASC contributions on Entrepreneurship Development (Related to Ambience)   | 20 | 8  | 3 | 1 | 0 |
| 13 | Rate the learning environment with adequate resources in Library (Related to Infrastructure)  | 14 | 16 | 1 | 1 | 0 |
| 14 | Rate the laboratories & other IT facilities are excellent for effective learning (Related to Infrastructure and ambience of the institution)  | 16 | 11 | 2 | 2 | 1 |
| 15 | Rate the infrastructure, cleanliness and other facilities in campus / canteen / common room / toilets / washrooms and maintenance (Related to Infrastructure and ambience of the institution) | 18 | 13 | 0 | 1 | 0 |
| 16 | Rate the sports (Indoor/Outdoor) facilities available and its maintenance (Related to Infrastructure and ambience of the institution)   | 19 | 10 | 2 | 1 | 0 |
| 17 | Rate the security and proctorial services in college for students. (Related to Infrastructure and ambience of the institution)  | 18 | 11 | 1 | 1 | 1 |
| 18 | Rate the resources and practices for conservation of energy, water, etc. in the campus (Related to Infrastructure and ambience of the institution)  | 21 | 8  | 0 | 2 | 1 |
| 19 | Rate the usage of modern teaching aids, Gadget, Smart class room and Web resources for content delivery (Related to Infrastructure and ambience of the institution)                           | 20 | 11 | 0 | 1 | 0 |
| 20 | Rate the consistent maintenance of green campus (Related to Infrastructure and ambience of the institution)   | 22 | 10 | 0 | 0 | 0 |



*B. Kalpana*  
**PRINCIPAL**  
PRINCE SHRI VENKATESHWARA  
ARTS AND SCIENCE COLLEGE  
GOWRIVAKKAM, CHENNAI-600 073.





**PRINCE SHRI VENKATESWARA ARTS AND SCIENCE COLLEGE**

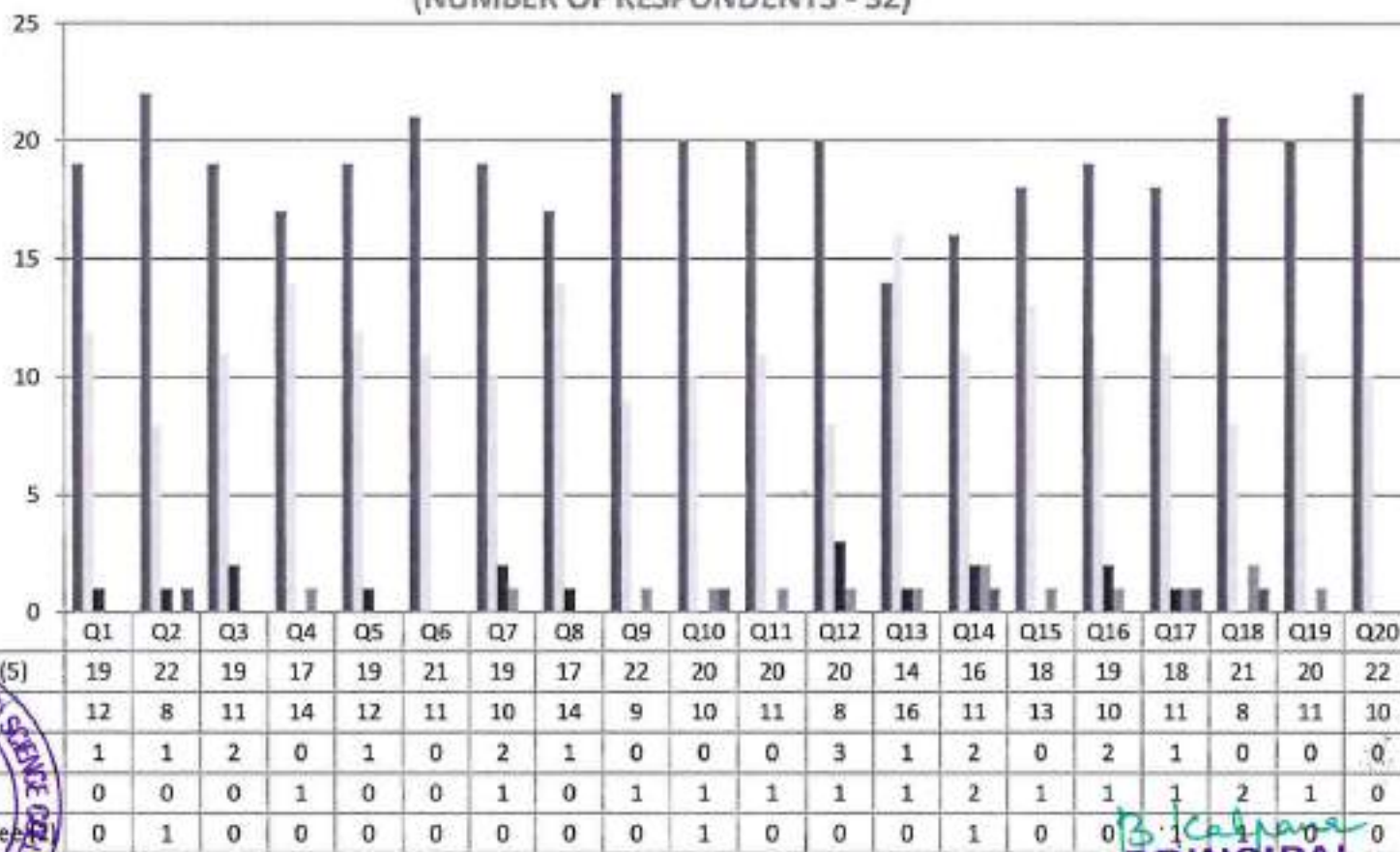
Gowrivakkam, Chennai-600073.

Affiliated to University of Madras

**STUDENT FEEDBACK ON CURRICULUM, INFRASTRUCTURE FACILITIES & AMBIENCE OF THE INSTITUTION - 2018-2019**

**B.Sc. ELECTRONICS AND COMMUNICATION SCIENCE**

(NUMBER OF RESPONDENTS - 32)



*B. J. Kalpana*  
**PRINCIPAL**  
 PRINCE SHRI VENKATESHWARA  
 ARTS AND SCIENCE COLLEGE  
 GOWRIVAKKAM, CHENNAI-600 073



**PRINCE SHRI VENKATESWARA ARTS AND SCIENCE COLLEGE**

Gowrivaldkam, Chennai-600073.

Affiliated to University of Madras

**STUDENT FEEDBACK ON CURRICULUM, INFRASTRUCTURE FACILITIES & AMBIENCE OF THE INSTITUTION – ANALYSIS REPORT**

**Academic Year** 2018-19  
**Department** B.Sc.-Computer Science  
**Number of Respondents** 216

Feedback Rate: Strongly Agree (5), Agree (4), Neutral (3), Disagree (2), Strongly Disagree (1)

| S. No | Feedback on Curriculum, infrastructure facilities & ambience of the institution  | 5   | 4  | 3  | 2 | 1 |
|-------|--|-----|----|----|---|---|
| 1     | Rate the courses in terms of their relevance to the latest and/ or future technologies and useful for employability (Related to Curriculum)                  | 110 | 88 | 18 | 0 | 0 |
| 2     | Rate the quality and relevance of the courses included in the curriculum (Related to Curriculum)   | 107 | 87 | 21 | 0 | 1 |
| 3     | Rate the opportunity for students to participate in internship, contest, field visit, IPT and conference (Related to Curriculum)                             | 111 | 84 | 19 | 2 | 0 |
| 4     | Rate the quality of teaching and teacher's approach in the entire program (Related to Curriculum)  | 111 | 88 | 17 | 0 | 0 |
| 5     | Rate the infrastructure of the classrooms for effective learning (Related to Curriculum)   | 110 | 88 | 18 | 0 | 0 |
| 6     | Rate the usage of teaching aids and ICT in the class by faculty to facilitate teaching (Related to Curriculum)   | 109 | 87 | 19 | 1 | 0 |
| 7     | Rate the opportunity for students to participate in extension activities (Related to Curriculum)   | 109 | 83 | 23 | 1 | 0 |
| 8     | Rate the opportunities provided to utilize Research facilities & assistance to prepare for Hackathons and other technical challenges (Related to Curriculum) | 112 | 85 | 19 | 0 | 0 |



## PRINCE SHRI VENKATESWARA ARTS AND SCIENCE COLLEGE

Gowrivaikam, Chennai-600073.

Affiliated to University of Madras

|    |   |     |    |    |   |   |
|----|---|-----|----|----|---|---|
| 9  | Rate the way of Grievances/problems are redressed and resolved in time. (Related to Curriculum)   | 113 | 86 | 16 | 1 | 0 |
| 10 | Rate the functioning of Placement Cell in getting jobs and placements (Related to Curriculum)   | 112 | 85 | 17 | 1 | 1 |
| 11 | Rate the transparency of the evaluation system in the College and the internal evaluation process by the teachers (Related to Assessment)   | 109 | 85 | 21 | 1 | 0 |
| 12 | Rate the PSVASC contributions on Entrepreneurship Development (Related to Ambience)   | 112 | 83 | 20 | 1 | 0 |
| 13 | Rate the learning environment with adequate resources in Library (Related to Infrastructure)  | 107 | 84 | 23 | 1 | 1 |
| 14 | Rate the laboratories & other IT facilities are excellent for effective learning (Related to Infrastructure and ambience of the institution)  | 112 | 82 | 19 | 3 | 0 |
| 15 | Rate the infrastructure, cleanliness and other facilities in campus / canteen / common room / toilets / washrooms and maintenance (Related to Infrastructure and ambience of the institution) | 110 | 86 | 19 | 1 | 0 |
| 16 | Rate the sports (Indoor/Outdoor) facilities available and its maintenance (Related to Infrastructure and ambience of the institution)   | 109 | 87 | 19 | 1 | 0 |
| 17 | Rate the security and proctorial services in college for students. (Related to Infrastructure and ambience of the institution)  | 112 | 83 | 19 | 1 | 1 |
| 18 | Rate the resources and practices for conservation of energy, water, etc. in the campus (Related to Infrastructure and ambience of the institution)  | 112 | 83 | 17 | 3 | 1 |
| 19 | Rate the usage of modern teaching aids, Gadget, Smart class room and Web resources for content delivery (Related to Infrastructure and ambience of the institution)                           | 113 | 85 | 17 | 1 | 0 |
| 20 | Rate the consistent maintenance of green campus (Related to Infrastructure and ambience of the institution)   | 112 | 88 | 16 | 0 | 0 |



*B. Kalpana*  
**PRINCIPAL**  
PRINCE SHRI VENKATESHWARA  
ARTS AND SCIENCE COLLEGE  
GOWRIVAKKAM, CHENNAI-600 073.

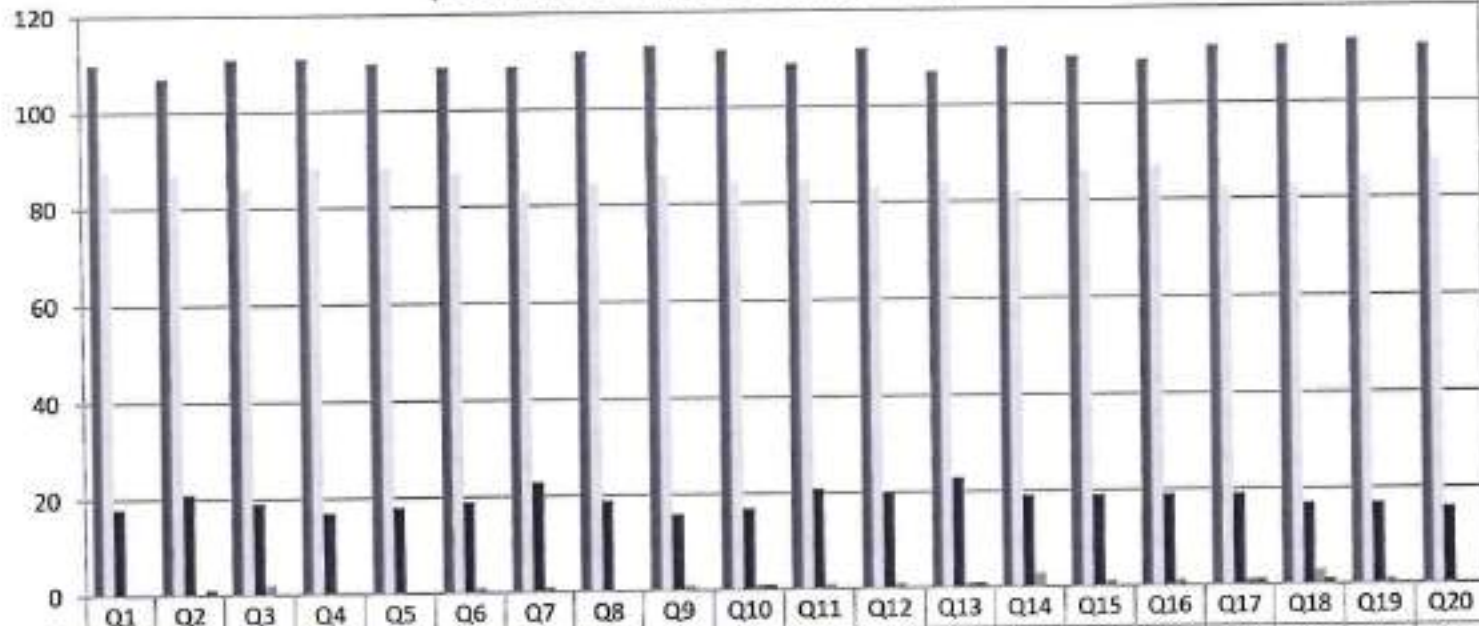


**PRINCE SHRI VENKATESWARA ARTS AND SCIENCE COLLEGE**  
 Gowrivakkam, Chennai-600073.  
 Affiliated to University of Madras

**STUDENT FEEDBACK ON CURRICULUM, INFRASTRUCTURE  
 FACILITIES & AMBIENCE OF THE INSTITUTION - 2018-2019**

**B.Sc. COMPUTER SCIENCE**

(NUMBER OF RESPONDENTS - 216)



|                       | Q1  | Q2  | Q3  | Q4  | Q5  | Q6  | Q7  | Q8  | Q9  | Q10 | Q11 | Q12 | Q13 | Q14 | Q15 | Q16 | Q17 | Q18 | Q19 | Q20 |
|-----------------------|-----|-----|-----|-----|-----|-----|-----|-----|-----|-----|-----|-----|-----|-----|-----|-----|-----|-----|-----|-----|
| Strongly Agree (5)    | 110 | 107 | 111 | 111 | 110 | 109 | 109 | 112 | 113 | 112 | 109 | 112 | 107 | 112 | 110 | 109 | 112 | 112 | 113 | 112 |
| Agree (4)             | 88  | 87  | 84  | 88  | 88  | 87  | 83  | 85  | 86  | 85  | 85  | 83  | 84  | 82  | 86  | 87  | 83  | 83  | 85  | 88  |
| Neutral (3)           | 18  | 21  | 19  | 17  | 18  | 19  | 23  | 19  | 16  | 17  | 21  | 20  | 23  | 19  | 19  | 19  | 19  | 17  | 17  | 16  |
| Disagree (2)          | 0   | 0   | 2   | 0   | 0   | 1   | 1   | 0   | 1   | 1   | 1   | 1   | 1   | 3   | 1   | 1   | 1   | 3   | 1   | 0   |
| Strongly Disagree (1) | 0   | 1   | 0   | 0   | 0   | 0   | 0   | 0   | 0   | 1   | 0   | 0   | 1   | 0   | 0   | 0   | 1   | 1   | 0   | 0   |



*B. Kalpana*  
**PRINCIPAL**  
 PRINCE SHRI VENKATESHWARA  
 ARTS AND SCIENCE COLLEGE  
 GOWRIVAKKAM, CHENNAI-600 073



**PRINCE SHRI VENKATESWARA ARTS AND SCIENCE COLLEGE**

Gowrivakkam, Chennai-600073.

Affiliated to University of Madras

**STUDENT FEEDBACK ON CURRICULUM, INFRASTRUCTURE FACILITIES & AMBIENCE OF THE INSTITUTION – ANALYSIS REPORT**

**Academic Year** 2018-19  
**Department** B. Com-General  
**Number of Respondents** 313

Feedback Rate: Strongly Agree (5), Agree (4), Neutral (3), Disagree (2), Strongly Disagree (1)

| S. No | Feedback on Curriculum, infrastructure facilities & ambience of the institution  | 5   | 4   | 3  | 2 | 1 |
|-------|--|-----|-----|----|---|---|
| 1     | Rate the courses in terms of their relevance to the latest and/ or future technologies and useful for employability (Related to Curriculum)                  | 154 | 151 | 7  | 1 | 0 |
| 2     | Rate the quality and relevance of the courses included in the curriculum (Related to Curriculum)   | 153 | 152 | 8  | 0 | 0 |
| 3     | Rate the opportunity for students to participate in internship, contest, field visit, IPT and conference (Related to Curriculum)                             | 150 | 152 | 11 | 0 | 0 |
| 4     | Rate the quality of teaching and teacher's approach in the entire program (Related to Curriculum)  | 155 | 147 | 10 | 1 | 0 |
| 5     | Rate the infrastructure of the classrooms for effective learning (Related to Curriculum)   | 157 | 149 | 7  | 0 | 0 |
| 6     | Rate the usage of teaching aids and ICT in the class by faculty to facilitate teaching (Related to Curriculum)   | 156 | 150 | 6  | 1 | 0 |
| 7     | Rate the opportunity for students to participate in extension activities (Related to Curriculum)   | 156 | 149 | 7  | 1 | 0 |
| 8     | Rate the opportunities provided to utilize Research facilities & assistance to prepare for Hackathons and other technical challenges (Related to Curriculum) | 154 | 151 | 7  | 0 | 1 |



## PRINCE SHRI VENKATESWARA ARTS AND SCIENCE COLLEGE

Gowrivaikkam, Chennai-600073.

Affiliated to University of Madras

|    |   |     |     |    |   |   |
|----|---|-----|-----|----|---|---|
| 9  | Rate the way of Grievances/problems are redressed and resolved in time. (Related to Curriculum)   | 152 | 151 | 10 | 0 | 0 |
| 10 | Rate the functioning of Placement Cell in getting jobs and placements (Related to Curriculum)   | 154 | 152 | 7  | 0 | 0 |
| 11 | Rate the transparency of the evaluation system in the College and the internal evaluation process by the teachers (Related to Assessment)   | 152 | 149 | 10 | 1 | 1 |
| 12 | Rate the PSVASC contributions on Entrepreneurship Development (Related to Ambience)   | 155 | 148 | 9  | 1 | 0 |
| 13 | Rate the learning environment with adequate resources in Library (Related to Infrastructure)  | 155 | 149 | 7  | 2 | 0 |
| 14 | Rate the laboratories & other IT facilities are excellent for effective learning (Related to Infrastructure and ambience of the institution)  | 156 | 148 | 7  | 1 | 1 |
| 15 | Rate the infrastructure, cleanliness and other facilities in campus / canteen / common room / toilets / washrooms and maintenance (Related to Infrastructure and ambience of the institution) | 152 | 149 | 9  | 2 | 1 |
| 16 | Rate the sports (Indoor/Outdoor) facilities available and its maintenance (Related to Infrastructure and ambience of the institution)   | 155 | 147 | 10 | 1 | 0 |
| 17 | Rate the security and proctorial services in college for students. (Related to Infrastructure and ambience of the institution)  | 150 | 153 | 9  | 1 | 0 |
| 18 | Rate the resources and practices for conservation of energy, water, etc. in the campus (Related to Infrastructure and ambience of the institution)  | 155 | 147 | 8  | 2 | 1 |
| 19 | Rate the usage of modern teaching aids, Gadget, Smart class room and Web resources for content delivery (Related to Infrastructure and ambience of the institution)                           | 153 | 151 | 9  | 0 | 0 |
| 20 | Rate the consistent maintenance of green campus (Related to Infrastructure and ambience of the institution)   | 155 | 152 | 6  | 0 | 0 |



*B. Kalpana*  
**PRINCIPAL**  
PRINCE SHRI VENKATESHWARA  
ARTS AND SCIENCE COLLEGE  
GOWRIVAKKAM, CHENNAI-600 073.

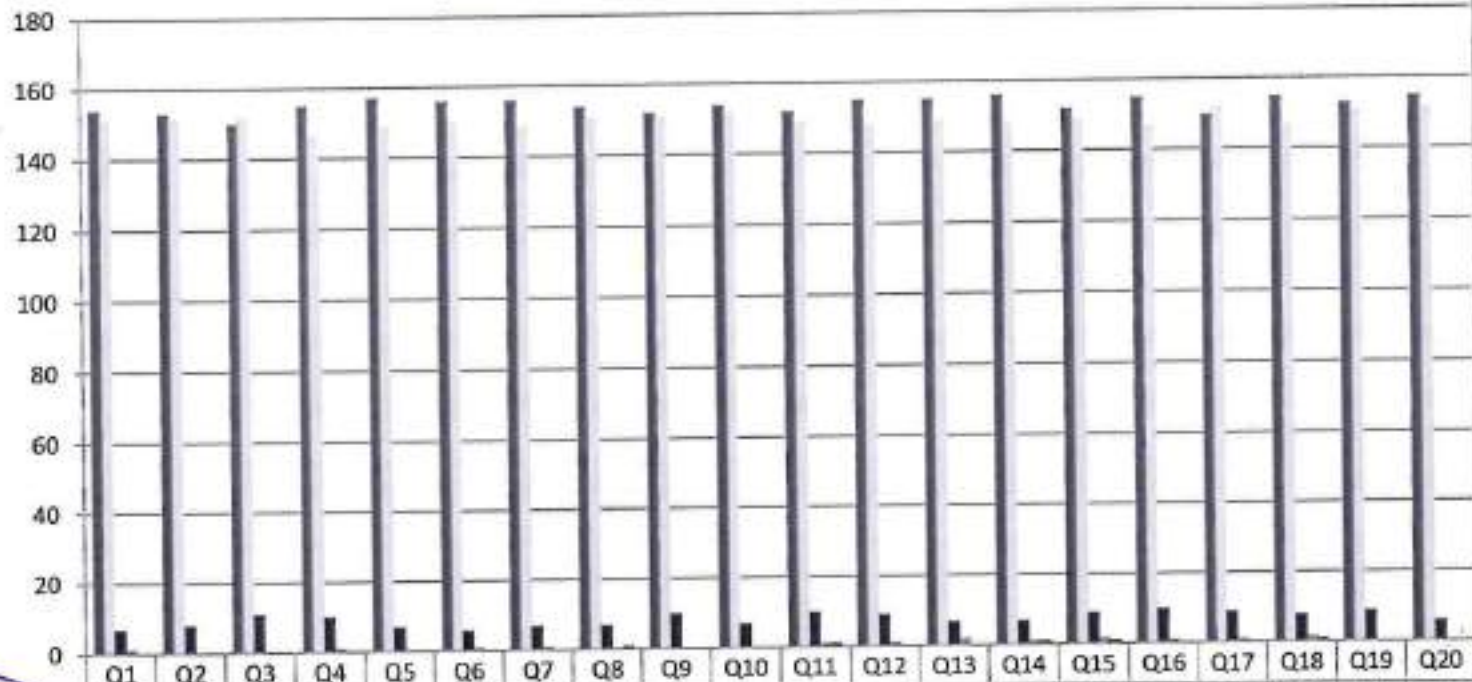


**PRINCE SHRI VENKATESWARA ARTS AND SCIENCE COLLEGE**  
 Gowrivaldkam, Chennai-600073.  
 Affiliated to University of Madras

**STUDENT FEEDBACK ON CURRICULUM, INFRASTRUCTURE  
 FACILITIES & AMBIENCE OF THE INSTITUTION - 2018-2019**

**B.COM (GENERAL)**

(NUMBER OF RESPONDENTS - 313)



|                       | Q1  | Q2  | Q3  | Q4  | Q5  | Q6  | Q7  | Q8  | Q9  | Q10 | Q11 | Q12 | Q13 | Q14 | Q15 | Q16 | Q17 | Q18 | Q19 | Q20 |
|-----------------------|-----|-----|-----|-----|-----|-----|-----|-----|-----|-----|-----|-----|-----|-----|-----|-----|-----|-----|-----|-----|
| Strongly Agree (5)    | 154 | 153 | 150 | 155 | 157 | 156 | 156 | 154 | 152 | 154 | 152 | 155 | 155 | 156 | 152 | 155 | 150 | 155 | 153 | 155 |
| Agree (4)             | 151 | 152 | 152 | 147 | 149 | 150 | 149 | 151 | 151 | 152 | 149 | 148 | 149 | 148 | 149 | 147 | 153 | 147 | 151 | 152 |
| Neutral (3)           | 7   | 8   | 11  | 10  | 7   | 6   | 7   | 7   | 10  | 7   | 10  | 9   | 7   | 7   | 9   | 10  | 9   | 8   | 9   | 6   |
| Disagree (2)          | 1   | 0   | 0   | 1   | 0   | 1   | 1   | 0   | 0   | 0   | 1   | 1   | 2   | 1   | 2   | 1   | 1   | 2   | 0   | 0   |
| Strongly Disagree (1) | 0   | 0   | 0   | 0   | 0   | 0   | 0   | 1   | 0   | 0   | 1   | 0   | 0   | 1   | 1   | 0   | 0   | 0   | 0   | 0   |



**PRINCIPAL**  
 PRINCE SHRI VENKATESHWARA  
 ARTS AND SCIENCE COLLEGE  
 GOWRIVAKKAM, CHENNAI-600 073.



## PRINCE SHRI VENKATESWARA ARTS AND SCIENCE COLLEGE

Gowrivaldtam, Chennai-600073.

Affiliated to University of Madras

### STUDENT FEEDBACK ON CURRICULUM, INFRASTRUCTURE FACILITIES & AMBIENCE OF THE INSTITUTION – ANALYSIS REPORT

**Academic Year** 2018-19  
**Department** BCA  
**Number of Respondents** 220

Feedback Rate: Strongly Agree (5), Agree (4), Neutral (3), Disagree (2), Strongly Disagree (1)

| S. No | Feedback on Curriculum, infrastructure facilities & ambience of the institution  | 5   | 4   | 3  | 2 | 1 |
|-------|--|-----|-----|----|---|---|
| 1     | Rate the courses in terms of their relevance to the latest and/ or future technologies and useful for employability (Related to Curriculum)                  | 106 | 99  | 14 | 1 | 0 |
| 2     | Rate the quality and relevance of the courses included in the curriculum (Related to Curriculum)   | 109 | 101 | 10 | 0 | 0 |
| 3     | Rate the opportunity for students to participate in internship, contest, field visit, IPT and conference (Related to Curriculum)                             | 110 | 102 | 7  | 1 | 0 |
| 4     | Rate the quality of teaching and teacher's approach in the entire program (Related to Curriculum)  | 109 | 101 | 8  | 1 | 1 |
| 5     | Rate the infrastructure of the classrooms for effective learning (Related to Curriculum)   | 108 | 103 | 8  | 1 | 0 |
| 6     | Rate the usage of teaching aids and ICT in the class by faculty to facilitate teaching (Related to Curriculum)   | 107 | 104 | 9  | 0 | 0 |
| 7     | Rate the opportunity for students to participate in extension activities (Related to Curriculum)   | 106 | 104 | 10 | 0 | 0 |
| 8     | Rate the opportunities provided to utilize Research facilities & assistance to prepare for Hackathons and other technical challenges (Related to Curriculum) | 104 | 101 | 14 | 1 | 0 |





## PRINCE SHRI VENKATESWARA ARTS AND SCIENCE COLLEGE

Gowrivakkam, Chennai-600073.

Affiliated to University of Madras

|    |   |     |     |    |   |   |
|----|---|-----|-----|----|---|---|
| 9  | Rate the way of Grievances/problems are redressed and resolved in time. (Related to Curriculum)   | 109 | 98  | 10 | 2 | 1 |
| 10 | Rate the functioning of Placement Cell in getting jobs and placements (Related to Curriculum)   | 107 | 102 | 10 | 1 | 0 |
| 11 | Rate the transparency of the evaluation system in the College and the internal evaluation process by the teachers (Related to Assessment)   | 106 | 103 | 10 | 1 | 0 |
| 12 | Rate the PSVASC contributions on Entrepreneurship Development (Related to Ambience)   | 109 | 99  | 10 | 1 | 1 |
| 13 | Rate the learning environment with adequate resources in Library (Related to Infrastructure)  | 109 | 100 | 8  | 2 | 1 |
| 14 | Rate the laboratories & other IT facilities are excellent for effective learning (Related to Infrastructure and ambience of the institution)  | 110 | 101 | 8  | 1 | 0 |
| 15 | Rate the infrastructure, cleanliness and other facilities in campus / canteen / common room / toilets / washrooms and maintenance (Related to Infrastructure and ambience of the institution) | 109 | 104 | 7  | 0 | 0 |
| 16 | Rate the sports (Indoor/Outdoor) facilities available and its maintenance (Related to Infrastructure and ambience of the institution)   | 106 | 101 | 12 | 1 | 0 |
| 17 | Rate the security and proctorial services in college for students. (Related to Infrastructure and ambience of the institution)  | 109 | 99  | 11 | 1 | 0 |
| 18 | Rate the resources and practices for conservation of energy, water, etc. in the campus (Related to Infrastructure and ambience of the institution)  | 107 | 104 | 9  | 0 | 0 |
| 19 | Rate the usage of modern teaching aids, Gadget, Smart class room and Web resources for content delivery (Related to Infrastructure and ambience of the institution)                           | 104 | 103 | 12 | 0 | 1 |
| 20 | Rate the consistent maintenance of green campus (Related to Infrastructure and ambience of the institution)   | 108 | 102 | 10 | 0 | 0 |



*B. Kalpana*  
**PRINCIPAL**  
PRINCE SHRI VENKATESHWARA  
ARTS AND SCIENCE COLLEGE  
GOWRIVAKKAM, CHENNAI-600 073.



**PRINCE SHRI VENKATESWARA ARTS AND SCIENCE COLLEGE**

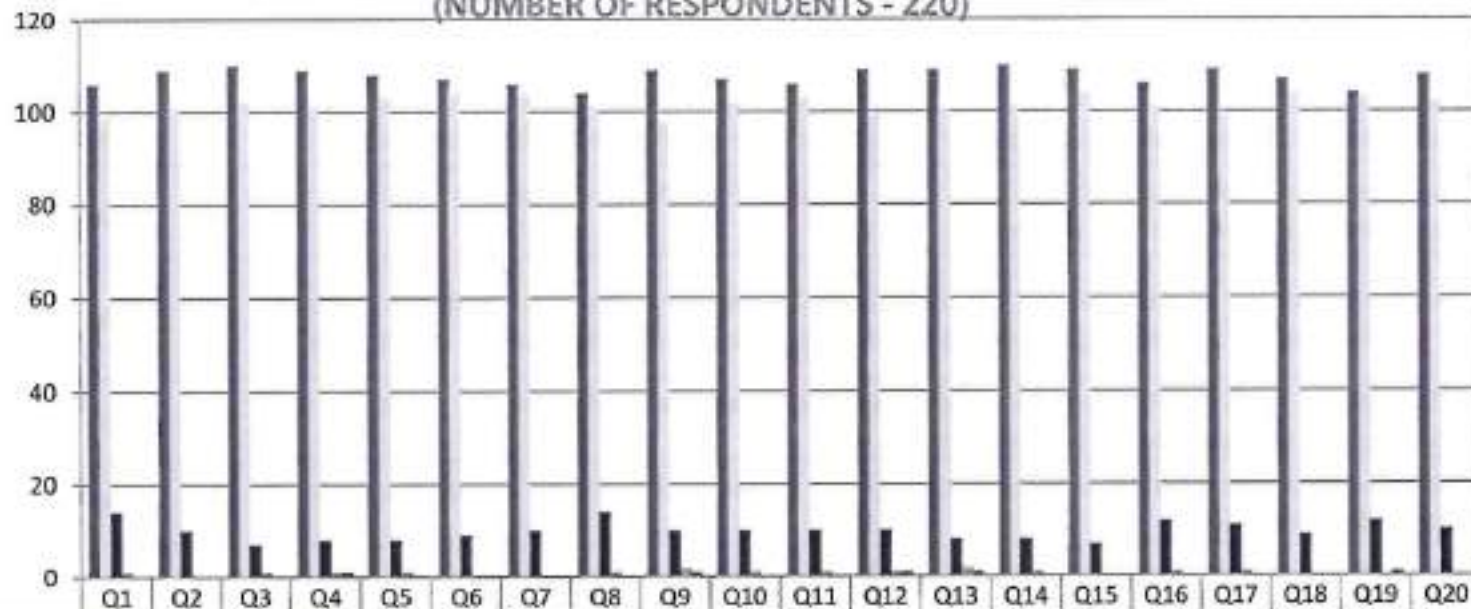
Gowrivakkam, Chennai-600073.

Affiliated to University of Madras

**STUDENT FEEDBACK ON CURRICULUM, INFRASTRUCTURE FACILITIES & AMBIENCE OF THE INSTITUTION - 2018-2019**

**BCA**

(NUMBER OF RESPONDENTS - 220)



|                       | Q1  | Q2  | Q3  | Q4  | Q5  | Q6  | Q7  | Q8  | Q9  | Q10 | Q11 | Q12 | Q13 | Q14 | Q15 | Q16 | Q17 | Q18 | Q19 | Q20 |
|-----------------------|-----|-----|-----|-----|-----|-----|-----|-----|-----|-----|-----|-----|-----|-----|-----|-----|-----|-----|-----|-----|
| Strongly Agree (5)    | 106 | 109 | 110 | 109 | 108 | 107 | 106 | 104 | 109 | 107 | 106 | 109 | 109 | 110 | 109 | 106 | 109 | 107 | 104 | 108 |
| Agree (4)             | 99  | 101 | 102 | 101 | 103 | 104 | 104 | 101 | 98  | 102 | 103 | 99  | 100 | 101 | 104 | 101 | 99  | 104 | 103 | 102 |
| Neutral (3)           | 14  | 10  | 7   | 8   | 8   | 9   | 10  | 14  | 10  | 10  | 10  | 10  | 8   | 8   | 7   | 12  | 11  | 9   | 12  | 10  |
| Disagree (2)          | 1   | 0   | 1   | 1   | 1   | 0   | 0   | 1   | 2   | 1   | 1   | 1   | 2   | 1   | 0   | 1   | 1   | 0   | 0   | 0   |
| Strongly Disagree (1) | 0   | 0   | 0   | 1   | 0   | 0   | 0   | 0   | 1   | 0   | 0   | 1   | 1   | 0   | 0   | 0   | 0   | 0   | 1   | 0   |



*B. Kelpana*  
**PRINCIPAL**  
 PRINCE SHRI VENKATESHWARA  
 ARTS AND SCIENCE COLLEGE  
 GOWRIVAKKAM, CHENNAI-600 073.



**PRINCE SHRI VENKATESWARA ARTS AND SCIENCE COLLEGE**

Gowrivakkam, Chennai-600073.

Affiliated to University of Madras

**STUDENT FEEDBACK ON CURRICULUM, INFRASTRUCTURE FACILITIES & AMBIENCE OF THE INSTITUTION – ANALYSIS REPORT**

**Academic Year**

**2018-19**

**Department**

**B.Sc.-Biotechnology**

**Number of Respondents**

**74**

Feedback Rate: Strongly Agree (5), Agree (4), Neutral (3), Disagree (2), Strongly Disagree (1)

| S. No | Feedback on Curriculum, infrastructure facilities & ambience of the institution  | 5  | 4  | 3 | 2 | 1 |
|-------|--|----|----|---|---|---|
| 1     | Rate the courses in terms of their relevance to the latest and/ or future technologies and useful for employability (Related to Curriculum)                  | 36 | 31 | 7 | 0 | 0 |
| 2     | Rate the quality and relevance of the courses included in the curriculum (Related to Curriculum)   | 37 | 32 | 4 | 1 | 0 |
| 3     | Rate the opportunity for students to participate in internship, contest, field visit, IPT and conference (Related to Curriculum)                             | 36 | 31 | 5 | 1 | 1 |
| 4     | Rate the quality of teaching and teacher's approach in the entire program (Related to Curriculum)  | 33 | 36 | 4 | 1 | 0 |
| 5     | Rate the infrastructure of the classrooms for effective learning (Related to Curriculum)   | 36 | 29 | 8 | 1 | 0 |
| 6     | Rate the usage of teaching aids and ICT in the class by faculty to facilitate teaching (Related to Curriculum)   | 31 | 36 | 6 | 1 | 0 |
| 7     | Rate the opportunity for students to participate in extension activities (Related to Curriculum)   | 31 | 37 | 5 | 0 | 1 |
| 8     | Rate the opportunities provided to utilize Research facilities & assistance to prepare for Hackathons and other technical challenges (Related to Curriculum) | 35 | 32 | 7 | 0 | 0 |



## PRINCE SHRI VENKATESWARA ARTS AND SCIENCE COLLEGE

Gowrivakkam, Chennai-600073.

Affiliated to University of Madras

|    |   |    |    |   |   |   |
|----|---|----|----|---|---|---|
| 9  | Rate the way of Grievances/problems are redressed and resolved in time. (Related to Curriculum)   | 35 | 33 | 5 | 1 | 0 |
| 10 | Rate the functioning of Placement Cell in getting jobs and placements (Related to Curriculum)   | 34 | 34 | 6 | 0 | 0 |
| 11 | Rate the transparency of the evaluation system in the College and the internal evaluation process by the teachers (Related to Assessment)   | 33 | 34 | 7 | 0 | 0 |
| 12 | Rate the PSVASC contributions on Entrepreneurship Development (Related to Ambience)   | 33 | 35 | 5 | 1 | 0 |
| 13 | Rate the learning environment with adequate resources in Library (Related to Infrastructure)  | 36 | 28 | 7 | 2 | 1 |
| 14 | Rate the laboratories & other IT facilities are excellent for effective learning (Related to Infrastructure and ambience of the institution)  | 34 | 34 | 5 | 1 | 0 |
| 15 | Rate the infrastructure, cleanliness and other facilities in campus / canteen / common room / toilets / washrooms and maintenance (Related to Infrastructure and ambience of the institution) | 33 | 33 | 7 | 1 | 0 |
| 16 | Rate the sports (Indoor/Outdoor) facilities available and its maintenance (Related to Infrastructure and ambience of the institution)   | 33 | 35 | 5 | 1 | 0 |
| 17 | Rate the security and proctorial services in college for students. (Related to Infrastructure and ambience of the institution)  | 36 | 29 | 7 | 1 | 1 |
| 18 | Rate the resources and practices for conservation of energy, water, etc. in the campus (Related to Infrastructure and ambience of the institution)  | 36 | 30 | 5 | 2 | 1 |
| 19 | Rate the usage of modern teaching aids, Gadget, Smart class room and Web resources for content delivery (Related to Infrastructure and ambience of the institution)                           | 37 | 32 | 4 | 1 | 0 |
| 20 | Rate the consistent maintenance of green campus (Related to Infrastructure and ambience of the institution)   | 36 | 34 | 4 | 0 | 0 |



*B. Kalpana*  
**PRINCIPAL**  
PRINCE SHRI VENKATESHWARA  
ARTS AND SCIENCE COLLEGE  
GOWRIVAKKAM, CHENNAI-600 073.



**PRINCE SHRI VENKATESWARA ARTS AND SCIENCE COLLEGE**

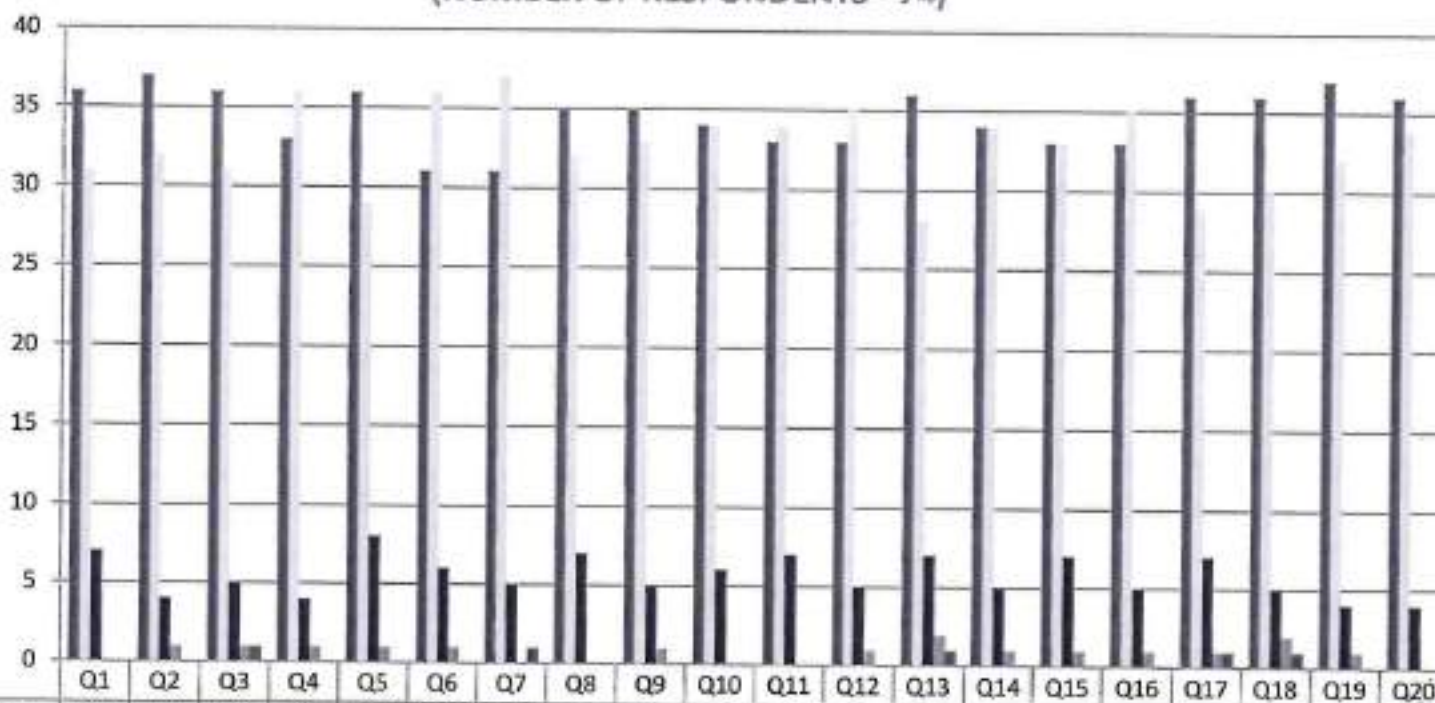
Gowrivakkam, Chennai-600073.

Affiliated to University of Madras

**STUDENT FEEDBACK ON CURRICULUM, INFRASTRUCTURE FACILITIES & AMBIENCE OF THE INSTITUTION - 2018-2019**

**B.Sc. BIOTECHNOLOGY**

(NUMBER OF RESPONDENTS - 74)



|                       | Q1 | Q2 | Q3 | Q4 | Q5 | Q6 | Q7 | Q8 | Q9 | Q10 | Q11 | Q12 | Q13 | Q14 | Q15 | Q16 | Q17 | Q18 | Q19 | Q20 |
|-----------------------|----|----|----|----|----|----|----|----|----|-----|-----|-----|-----|-----|-----|-----|-----|-----|-----|-----|
| Strongly Agree (5)    | 36 | 37 | 36 | 33 | 36 | 31 | 31 | 35 | 35 | 34  | 33  | 33  | 36  | 34  | 33  | 33  | 36  | 36  | 37  | 36  |
| Agree (4)             | 31 | 32 | 31 | 36 | 29 | 36 | 37 | 32 | 33 | 34  | 34  | 35  | 28  | 34  | 33  | 35  | 29  | 30  | 32  | 34  |
| Neutral (3)           | 7  | 4  | 5  | 4  | 8  | 6  | 5  | 7  | 5  | 6   | 7   | 5   | 7   | 5   | 7   | 5   | 7   | 5   | 4   | 4   |
| Disagree (2)          | 0  | 1  | 1  | 1  | 1  | 1  | 0  | 0  | 1  | 0   | 0   | 1   | 2   | 1   | 1   | 1   | 1   | 2   | 1   | 0   |
| Strongly Disagree (1) | 0  | 0  | 1  | 0  | 0  | 0  | 1  | 0  | 0  | 0   | 0   | 0   | 1   | 0   | 0   | 0   | 1   | 1   | 0   | 0   |



**PRINCIPAL**  
 PRINCE SHRI VENKATESHWARA  
 ARTS AND SCIENCE COLLEGE  
 CHENNAI-600073



## PRINCE SHRI VENKATESWARA ARTS AND SCIENCE COLLEGE

Gowrivaikam, Chennai-600073.

Affiliated to University of Madras

### STUDENT FEEDBACK ON CURRICULUM, INFRASTRUCTURE FACILITIES & AMBIENCE OF THE INSTITUTION – ANALYSIS REPORT

Academic Year

2018-19

Department

B. Com - Accounting and Finance

Number of Respondents

168

Feedback Rate: Strongly Agree (5), Agree (4), Neutral (3), Disagree (2), Strongly Disagree (1)

| S. No | Feedback on Curriculum, infrastructure facilities & ambience of the institution  | 5   | 4  | 3  | 2 | 1 |
|-------|--|-----|----|----|---|---|
| 1     | Rate the courses in terms of their relevance to the latest and/ or future technologies and useful for employability (Related to Curriculum)                  | 101 | 58 | 9  | 0 | 0 |
| 2     | Rate the quality and relevance of the courses included in the curriculum (Related to Curriculum)   | 100 | 58 | 10 | 0 | 0 |
| 3     | Rate the opportunity for students to participate in internship, contest, field visit, IPT and conference (Related to Curriculum)                             | 100 | 59 | 8  | 1 | 0 |
| 4     | Rate the quality of teaching and teacher's approach in the entire program (Related to Curriculum)  | 103 | 52 | 10 | 2 | 1 |
| 5     | Rate the infrastructure of the classrooms for effective learning (Related to Curriculum)   | 101 | 58 | 8  | 1 | 0 |
| 6     | Rate the usage of teaching aids and ICT in the class by faculty to facilitate teaching (Related to Curriculum)   | 100 | 57 | 10 | 1 | 0 |
| 7     | Rate the opportunity for students to participate in extension activities (Related to Curriculum)   | 100 | 59 | 8  | 1 | 0 |
| 8     | Rate the opportunities provided to utilize Research facilities & assistance to prepare for Hackathons and other technical challenges (Related to Curriculum) | 103 | 53 | 10 | 1 | 1 |



## PRINCE SHRI VENKATESWARA ARTS AND SCIENCE COLLEGE

Gowrivaikam, Chennai-600073.

Affiliated to University of Madras

|    |   |     |    |    |   |   |
|----|---|-----|----|----|---|---|
| 9  | Rate the way of Grievances/problems are redressed and resolved in time. (Related to Curriculum)   | 103 | 54 | 8  | 2 | 1 |
| 10 | Rate the functioning of Placement Cell in getting jobs and placements (Related to Curriculum)   | 104 | 56 | 7  | 1 | 0 |
| 11 | Rate the transparency of the evaluation system in the College and the internal evaluation process by the teachers (Related to Assessment)   | 104 | 56 | 7  | 1 | 0 |
| 12 | Rate the PSVASC contributions on Entrepreneurship Development (Related to Ambience)   | 103 | 55 | 8  | 1 | 1 |
| 13 | Rate the learning environment with adequate resources in Library (Related to Infrastructure)  | 100 | 60 | 7  | 1 | 0 |
| 14 | Rate the laboratories & other IT facilities are excellent for effective learning (Related to Infrastructure and ambience of the institution)  | 103 | 53 | 11 | 1 | 0 |
| 15 | Rate the infrastructure, cleanliness and other facilities in campus / canteen / common room / toilets / washrooms and maintenance (Related to Infrastructure and ambience of the institution) | 98  | 60 | 9  | 1 | 0 |
| 16 | Rate the sports (Indoor/Outdoor) facilities available and its maintenance (Related to Infrastructure and ambience of the institution)   | 98  | 61 | 8  | 0 | 1 |
| 17 | Rate the security and proctorial services in college for students. (Related to Infrastructure and ambience of the institution)  | 102 | 56 | 10 | 0 | 0 |
| 18 | Rate the resources and practices for conservation of energy, water, etc. in the campus (Related to Infrastructure and ambience of the institution)  | 102 | 57 | 8  | 1 | 0 |
| 19 | Rate the usage of modern teaching aids, Gadget, Smart class room and Web resources for content delivery (Related to Infrastructure and ambience of the institution)                           | 104 | 56 | 7  | 1 | 0 |
| 20 | Rate the consistent maintenance of green campus (Related to Infrastructure and ambience of the institution)   | 103 | 58 | 7  | 0 | 0 |



*B. Kalpane*  
**PRINCIPAL**  
PRINCE SHRI VENKATESHWARA  
ARTS AND SCIENCE COLLEGE  
GOWRIVAIKAM, CHENNAI-600 073.



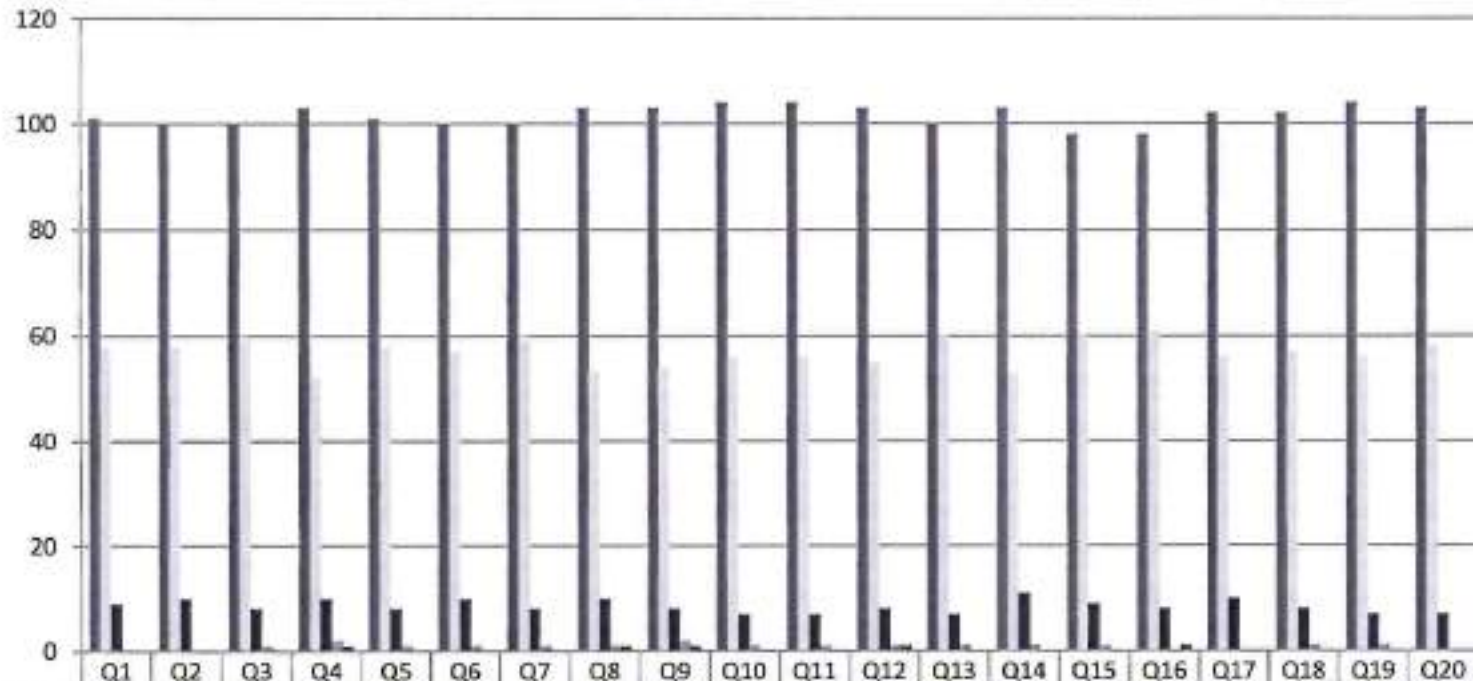
**PRINCE SHRI VENKATESWARA ARTS AND SCIENCE COLLEGE**

Gowrivakkam, Chennai-600073.

Affiliated to University of Madras

**STUDENT FEEDBACK ON CURRICULUM, INFRASTRUCTURE FACILITIES & AMBIENCE OF THE INSTITUTION - 2018-2019**  
**B.COM (ACCOUNTING & FINANCE)**

(NUMBER OF RESPONDENTS - 168)



|                       |     |     |     |     |     |     |     |     |     |     |     |     |     |     |    |    |     |     |     |     |
|-----------------------|-----|-----|-----|-----|-----|-----|-----|-----|-----|-----|-----|-----|-----|-----|----|----|-----|-----|-----|-----|
| Strongly Agree (5)    | 101 | 100 | 100 | 103 | 101 | 100 | 100 | 103 | 103 | 104 | 104 | 103 | 100 | 103 | 98 | 98 | 102 | 102 | 104 | 103 |
| Agree (4)             | 58  | 58  | 59  | 52  | 58  | 57  | 59  | 53  | 54  | 56  | 56  | 55  | 60  | 53  | 60 | 61 | 56  | 57  | 56  | 58  |
| Neutral (3)           | 9   | 10  | 8   | 10  | 8   | 10  | 8   | 10  | 8   | 7   | 7   | 8   | 7   | 11  | 9  | 8  | 10  | 8   | 7   | 7   |
| Disagree (2)          | 0   | 0   | 1   | 2   | 1   | 1   | 1   | 1   | 2   | 1   | 1   | 1   | 1   | 1   | 1  | 0  | 0   | 0   | 0   | 0   |
| Strongly Disagree (1) | 0   | 0   | 0   | 1   | 0   | 0   | 0   | 1   | 1   | 0   | 0   | 1   | 0   | 0   | 0  | 1  | 0   | 0   | 0   | 0   |



*B. Kalpana*  
**PRINCIPAL**  
 PRINCE SHRI VENKATESHWARA  
 ARTS AND SCIENCE COLLEGE  
 GOWRIVAKKAM, CHENNAI-600 073.





**PRINCE SHRI VENKATESWARA ARTS AND SCIENCE COLLEGE**

Gowrivakkam, Chennai-600073.

Affiliated to University of Madras

**STUDENT FEEDBACK ON CURRICULUM, INFRASTRUCTURE FACILITIES & AMBIENCE OF THE INSTITUTION – ANALYSIS REPORT**

**Academic Year** 2018-19  
**Department** B.A. English  
**Number of Respondents** 57

Feedback Rate: Strongly Agree (5), Agree (4), Neutral (3), Disagree (2), Strongly Disagree (1)

| S. No | Feedback on Curriculum, infrastructure facilities & ambience of the institution  | 5  | 4  | 3  | 2 | 1 |
|-------|--|----|----|----|---|---|
| 1     | Rate the courses in terms of their relevance to the latest and/ or future technologies and useful for employability (Related to Curriculum)                  | 28 | 17 | 12 | 0 | 0 |
| 2     | Rate the quality and relevance of the courses included in the curriculum (Related to Curriculum)   | 26 | 20 | 11 | 0 | 0 |
| 3     | Rate the opportunity for students to participate in internship, contest, field visit, IPT and conference (Related to Curriculum)                             | 28 | 16 | 12 | 1 | 0 |
| 4     | Rate the quality of teaching and teacher's approach in the entire program (Related to Curriculum)  | 34 | 13 | 10 | 0 | 0 |
| 5     | Rate the infrastructure of the classrooms for effective learning (Related to Curriculum)   | 28 | 17 | 11 | 0 | 1 |
| 6     | Rate the usage of teaching aids and ICT in the class by faculty to facilitate teaching (Related to Curriculum)   | 25 | 20 | 12 | 0 | 0 |
| 7     | Rate the opportunity for students to participate in extension activities (Related to Curriculum)   | 28 | 17 | 11 | 1 | 0 |
| 8     | Rate the opportunities provided to utilize Research facilities & assistance to prepare for Hackathons and other technical challenges (Related to Curriculum) | 31 | 13 | 12 | 0 | 1 |



## PRINCE SHRI VENKATESWARA ARTS AND SCIENCE COLLEGE

Gowrivakkam, Chennai-600073.

Affiliated to University of Madras

|    |   |    |    |    |   |   |
|----|---|----|----|----|---|---|
| 9  | Rate the way of Grievances/problems are redressed and resolved in time. (Related to Curriculum)   | 34 | 13 | 9  | 1 | 0 |
| 10 | Rate the functioning of Placement Cell in getting jobs and placements (Related to Curriculum)   | 27 | 18 | 10 | 1 | 1 |
| 11 | Rate the transparency of the evaluation system in the College and the internal evaluation process by the teachers (Related to Assessment)   | 28 | 19 | 9  | 1 | 0 |
| 12 | Rate the PSVASC contributions on Entrepreneurship Development (Related to Ambience)   | 26 | 17 | 12 | 2 | 0 |
| 13 | Rate the learning environment with adequate resources in Library (Related to Infrastructure)  | 33 | 12 | 11 | 1 | 0 |
| 14 | Rate the laboratories & other IT facilities are excellent for effective learning (Related to Infrastructure and ambience of the institution)  | 28 | 14 | 12 | 2 | 1 |
| 15 | Rate the infrastructure, cleanliness and other facilities in campus / canteen / common room / toilets / washrooms and maintenance (Related to Infrastructure and ambience of the institution) | 30 | 17 | 9  | 1 | 0 |
| 16 | Rate the sports (Indoor/Outdoor) facilities available and its maintenance (Related to Infrastructure and ambience of the institution)   | 27 | 17 | 11 | 1 | 1 |
| 17 | Rate the security and proctorial services in college for students. (Related to Infrastructure and ambience of the institution)  | 28 | 16 | 12 | 1 | 0 |
| 18 | Rate the resources and practices for conservation of energy, water, etc. in the campus (Related to Infrastructure and ambience of the institution)  | 35 | 10 | 9  | 2 | 1 |
| 19 | Rate the usage of modern teaching aids, Gadget, Smart class room and Web resources for content delivery (Related to Infrastructure and ambience of the institution)                           | 31 | 15 | 10 | 1 | 0 |
| 20 | Rate the consistent maintenance of green campus (Related to Infrastructure and ambience of the institution)   | 27 | 21 | 9  | 0 | 0 |



*B. Kalpana*  
**PRINCIPAL**  
PRINCE SHRI VENKATESHWARA  
ARTS AND SCIENCE COLLEGE  
GOWRIVAKKAM, CHENNAI-600 073.



**PRINCE SHRI VENKATESWARA ARTS AND SCIENCE COLLEGE**

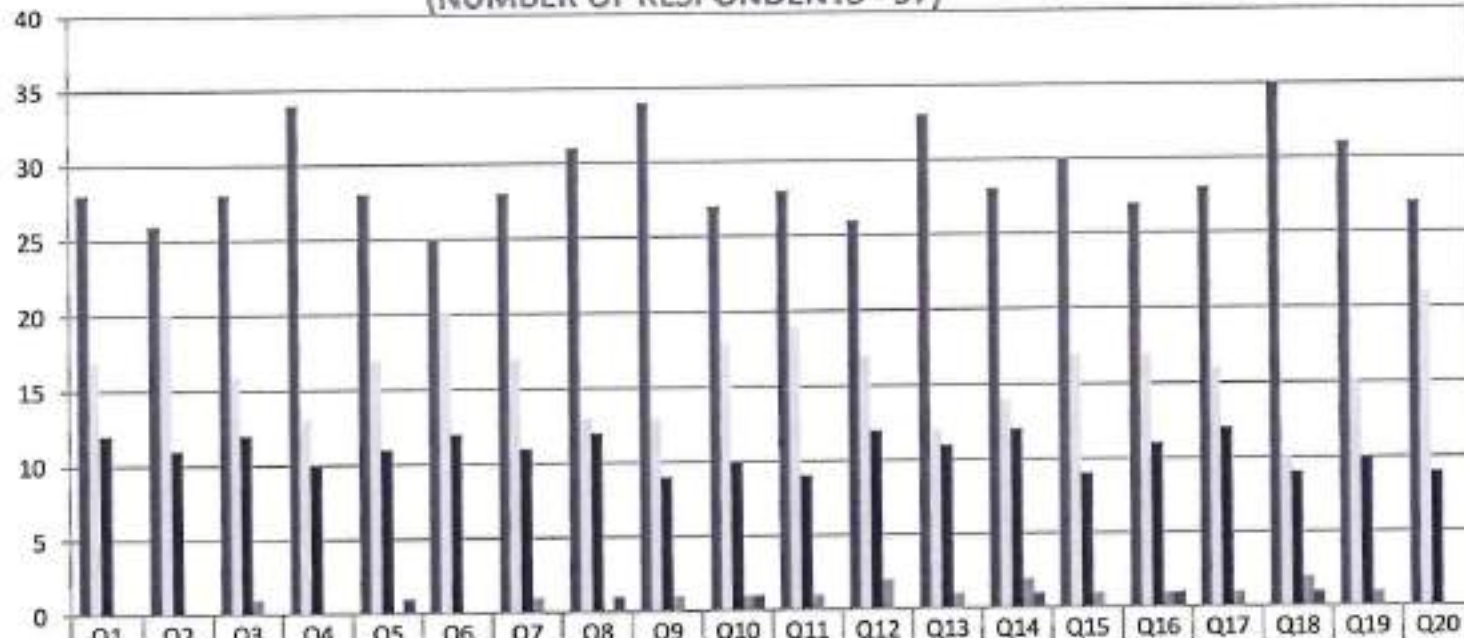
Gowrivakkam, Chennai-600073.

Affiliated to University of Madras

**STUDENT FEEDBACK ON CURRICULUM, INFRASTRUCTURE FACILITIES & AMBIENCE OF THE INSTITUTION - 2018-2019**

**B.A. ENGLISH**

(NUMBER OF RESPONDENTS - 57)



|                       | Q1 | Q2 | Q3 | Q4 | Q5 | Q6 | Q7 | Q8 | Q9 | Q10 | Q11 | Q12 | Q13 | Q14 | Q15 | Q16 | Q17 | Q18 | Q19 | Q20 |
|-----------------------|----|----|----|----|----|----|----|----|----|-----|-----|-----|-----|-----|-----|-----|-----|-----|-----|-----|
| Strongly Agree (5)    | 28 | 26 | 28 | 34 | 28 | 25 | 28 | 31 | 34 | 27  | 28  | 26  | 33  | 28  | 30  | 27  | 28  | 35  | 31  | 27  |
| Agree (4)             | 17 | 20 | 16 | 13 | 17 | 20 | 17 | 13 | 13 | 18  | 19  | 17  | 12  | 14  | 17  | 17  | 16  | 10  | 15  | 21  |
| Neutral (3)           | 12 | 11 | 12 | 10 | 11 | 12 | 11 | 12 | 9  | 10  | 9   | 12  | 11  | 12  | 9   | 11  | 12  | 9   | 10  | 9   |
| Disagree (2)          | 0  | 0  | 1  | 0  | 0  | 0  | 1  | 0  | 1  | 1   | 1   | 2   | 1   | 2   | 1   | 1   | 1   | 2   | 1   | 0   |
| Strongly Disagree (1) | 0  | 0  | 0  | 0  | 1  | 0  | 0  | 1  | 0  | 1   | 0   | 0   | 0   | 1   | 0   | 1   | 0   | 0   | 0   | 0   |



*B. Kalpana*  
**PRINCIPAL**  
 PRINCE SHRI VENKATESHWARA  
 ARTS AND SCIENCE COLLEGE  
 GOWRIVAKKAM, CHENNAI-600 073



**PRINCE SHRI VENKATESWARA ARTS AND SCIENCE COLLEGE**

Gowrivakdam, Chennai-600073.

Affiliated to University of Madras

**STUDENT FEEDBACK ON CURRICULUM, INFRASTRUCTURE FACILITIES & AMBIENCE OF THE INSTITUTION – ANALYSIS REPORT**

**Academic Year** 2018-19  
**Department** M.Sc. Microbiology  
**Number of Respondents** 9

Feedback Rate: Strongly Agree (5), Agree (4), Neutral (3), Disagree (2), Strongly Disagree (1)

| S. No | Feedback on Curriculum, infrastructure facilities & ambience of the institution  | 5 | 4 | 3 | 2 | 1 |
|-------|--|---|---|---|---|---|
| 1     | Rate the courses in terms of their relevance to the latest and/ or future technologies and useful for employability (Related to Curriculum)                  | 5 | 4 | 0 | 0 | 0 |
| 2     | Rate the quality and relevance of the courses included in the curriculum (Related to Curriculum)   | 5 | 4 | 0 | 0 | 0 |
| 3     | Rate the opportunity for students to participate in internship, contest, field visit, IPT and conference (Related to Curriculum)                             | 4 | 5 | 0 | 0 | 0 |
| 4     | Rate the quality of teaching and teacher's approach in the entire program (Related to Curriculum)  | 4 | 5 | 0 | 0 | 0 |
| 5     | Rate the infrastructure of the classrooms for effective learning (Related to Curriculum)   | 4 | 5 | 0 | 0 | 0 |
| 6     | Rate the usage of teaching aids and ICT in the class by faculty to facilitate teaching (Related to Curriculum)   | 5 | 4 | 0 | 0 | 0 |
| 7     | Rate the opportunity for students to participate in extension activities (Related to Curriculum)   | 4 | 4 | 1 | 0 | 0 |
| 8     | Rate the opportunities provided to utilize Research facilities & assistance to prepare for Hackathons and other technical challenges (Related to Curriculum) | 4 | 5 | 0 | 0 | 0 |



## PRINCE SHRI VENKATESWARA ARTS AND SCIENCE COLLEGE

Gowrivaikam, Chennai-600073.

Affiliated to University of Madras

|    |   |   |   |   |   |   |
|----|---|---|---|---|---|---|
| 9  | Rate the way of Grievances/problems are redressed and resolved in time. (Related to Curriculum)   | 4 | 5 | 0 | 0 | 0 |
| 10 | Rate the functioning of Placement Cell in getting jobs and placements (Related to Curriculum)   | 5 | 4 | 0 | 0 | 0 |
| 11 | Rate the transparency of the evaluation system in the College and the internal evaluation process by the teachers (Related to Assessment)   | 4 | 5 | 0 | 0 | 0 |
| 12 | Rate the PSVASC contributions on Entrepreneurship Development (Related to Ambience)   | 4 | 5 | 0 | 0 | 0 |
| 13 | Rate the learning environment with adequate resources in Library (Related to Infrastructure)  | 5 | 4 | 0 | 0 | 0 |
| 14 | Rate the laboratories & other IT facilities are excellent for effective learning (Related to Infrastructure and ambience of the institution)  | 5 | 4 | 0 | 0 | 0 |
| 15 | Rate the infrastructure, cleanliness and other facilities in campus / canteen / common room / toilets / washrooms and maintenance (Related to Infrastructure and ambience of the institution) | 5 | 4 | 0 | 0 | 0 |
| 16 | Rate the sports (Indoor/Outdoor) facilities available and its maintenance (Related to Infrastructure and ambience of the institution)   | 4 | 5 | 0 | 0 | 0 |
| 17 | Rate the security and proctorial services in college for students. (Related to Infrastructure and ambience of the institution)  | 3 | 5 | 1 | 0 | 0 |
| 18 | Rate the resources and practices for conservation of energy, water, etc. in the campus (Related to Infrastructure and ambience of the institution)  | 4 | 5 | 0 | 0 | 0 |
| 19 | Rate the usage of modern teaching aids, Gadget, Smart class room and Web resources for content delivery (Related to Infrastructure and ambience of the institution)                           | 4 | 5 | 0 | 0 | 0 |
| 20 | Rate the consistent maintenance of green campus (Related to Infrastructure and ambience of the institution)   | 3 | 5 | 1 | 0 | 0 |



*B. Kalpana*  
**PRINCIPAL**

PRINCE SHRI VENKATESHWARA  
ARTS AND SCIENCE COLLEGE  
GOWRIVAİKAM, CHENNAI-600 073.



**PRINCE SHRI VENKATESWARA ARTS AND SCIENCE COLLEGE**

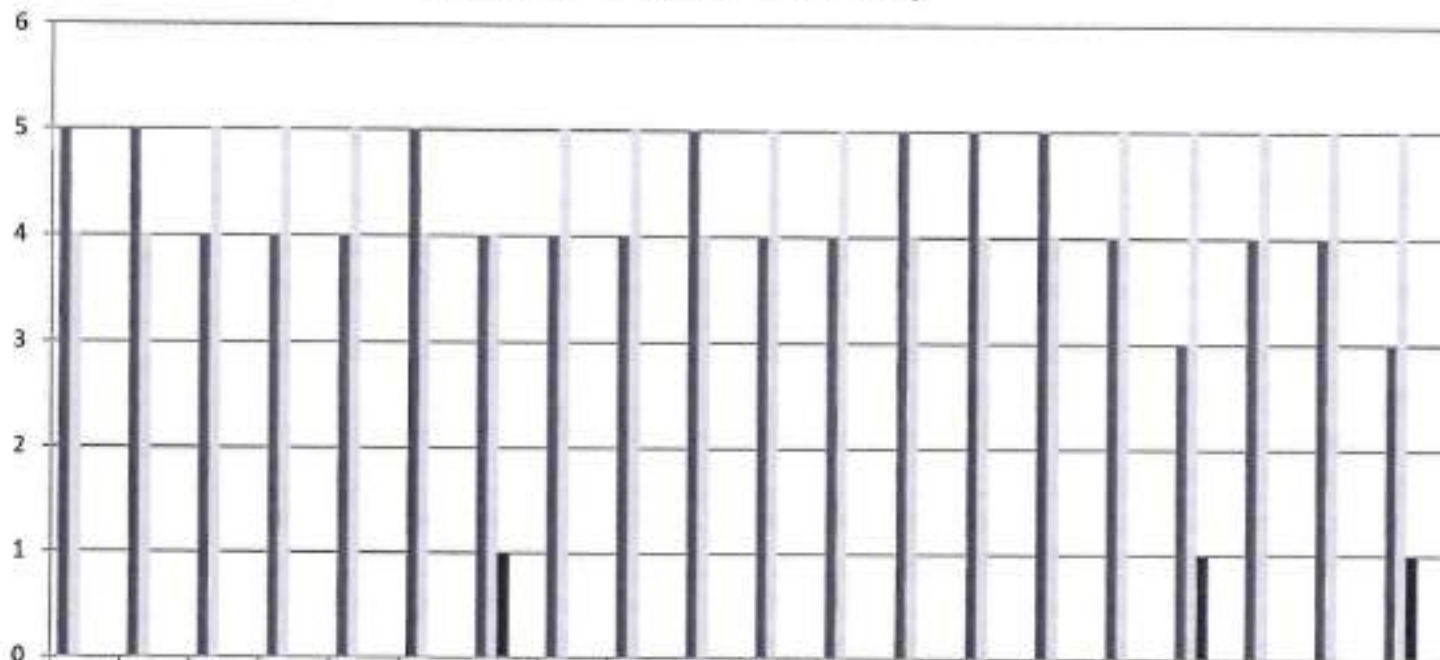
Gowrivakdam, Chennai-600073.

Affiliated to University of Madras

**STUDENT FEEDBACK ON CURRICULUM, INFRASTRUCTURE  
FACILITIES & AMBIENCE OF THE INSTITUTION - 2018-2019**

**M.Sc. MICROBIOLOGY**

(NUMBER OF RESPONDENTS - 9)



|                       | Q1 | Q2 | Q3 | Q4 | Q5 | Q6 | Q7 | Q8 | Q9 | Q10 | Q11 | Q12 | Q13 | Q14 | Q15 | Q16 | Q17 | Q18 | Q19 | Q20 |
|-----------------------|----|----|----|----|----|----|----|----|----|-----|-----|-----|-----|-----|-----|-----|-----|-----|-----|-----|
| Strongly Agree (5)    | 5  | 5  | 4  | 4  | 4  | 5  | 4  | 4  | 4  | 5   | 4   | 4   | 5   | 5   | 5   | 4   | 3   | 4   | 4   | 3   |
| Agree (4)             | 4  | 4  | 5  | 5  | 5  | 4  | 4  | 5  | 5  | 4   | 5   | 5   | 4   | 4   | 4   | 5   | 5   | 5   | 5   | 5   |
| Neutral (3)           | 0  | 0  | 0  | 0  | 0  | 0  | 1  | 0  | 0  | 0   | 0   | 0   | 0   | 0   | 0   | 0   | 1   | 0   | 0   | 1   |
| Disagree (2)          | 0  | 0  | 0  | 0  | 0  | 0  | 0  | 0  | 0  | 0   | 0   | 0   | 0   | 0   | 0   | 0   | 0   | 0   | 0   | 0   |
| Strongly Disagree (1) | 0  | 0  | 0  | 0  | 0  | 0  | 0  | 0  | 0  | 0   | 0   | 0   | 0   | 0   | 0   | 0   | 0   | 0   | 0   | 0   |



*B. Kalpana*  
**PRINCIPAL**  
PRINCE SHRI VENKATESWARA  
ARTS AND SCIENCE COLLEGE  
GOWRIVAKKAM CHENNAI-600 073.



**PRINCE SHRI VENKATESWARA ARTS AND SCIENCE COLLEGE**

Gowrivakkam, Chennai-600073.

Affiliated to University of Madras

**STUDENT FEEDBACK ON CURRICULUM, INFRASTRUCTURE FACILITIES & AMBIENCE OF THE INSTITUTION – ANALYSIS REPORT**

**Academic Year**

**2018-19**

**Department**

**M.Sc. Computer Science**

**Number of Respondents**

**8**

Feedback Rate: Strongly Agree (5), Agree (4), Neutral (3), Disagree (2), Strongly Disagree (1)

| S. No | Feedback on Curriculum, infrastructure facilities & ambience of the institution  | 5 | 4 | 3 | 2 | 1 |
|-------|--|---|---|---|---|---|
| 1     | Rate the courses in terms of their relevance to the latest and/ or future technologies and useful for employability (Related to Curriculum)                  | 4 | 4 | 0 | 0 | 0 |
| 2     | Rate the quality and relevance of the courses included in the curriculum (Related to Curriculum)   | 5 | 3 | 0 | 0 | 0 |
| 3     | Rate the opportunity for students to participate in internship, contest, field visit, IPT and conference (Related to Curriculum)                             | 4 | 4 | 0 | 0 | 0 |
| 4     | Rate the quality of teaching and teacher's approach in the entire program (Related to Curriculum)  | 4 | 4 | 0 | 0 | 0 |
| 5     | Rate the infrastructure of the classrooms for effective learning (Related to Curriculum)   | 4 | 4 | 0 | 0 | 0 |
| 6     | Rate the usage of teaching aids and ICT in the class by faculty to facilitate teaching (Related to Curriculum)   | 5 | 3 | 0 | 0 | 0 |
| 7     | Rate the opportunity for students to participate in extension activities (Related to Curriculum)   | 4 | 4 | 0 | 0 | 0 |
| 8     | Rate the opportunities provided to utilize Research facilities & assistance to prepare for Hackathons and other technical challenges (Related to Curriculum) | 4 | 4 | 0 | 0 | 0 |



## PRINCE SHRI VENKATESWARA ARTS AND SCIENCE COLLEGE

Gowrivakkam, Chennai-600073.

Affiliated to University of Madras

|    |   |   |   |   |   |   |
|----|---|---|---|---|---|---|
| 9  | Rate the way of Grievances/problems are redressed and resolved in time. (Related to Curriculum)   | 4 | 3 | 1 | 0 | 0 |
| 10 | Rate the functioning of Placement Cell in getting jobs and placements (Related to Curriculum)   | 4 | 4 | 0 | 0 | 0 |
| 11 | Rate the transparency of the evaluation system in the College and the internal evaluation process by the teachers (Related to Assessment)   | 4 | 4 | 0 | 0 | 0 |
| 12 | Rate the PSVASC contributions on Entrepreneurship Development (Related to Ambience)   | 4 | 4 | 0 | 0 | 0 |
| 13 | Rate the learning environment with adequate resources in Library (Related to Infrastructure)  | 5 | 3 | 0 | 0 | 0 |
| 14 | Rate the laboratories & other IT facilities are excellent for effective learning (Related to Infrastructure and ambience of the institution)  | 3 | 4 | 0 | 1 | 0 |
| 15 | Rate the infrastructure, cleanliness and other facilities in campus / canteen / common room / toilets / washrooms and maintenance (Related to Infrastructure and ambience of the institution) | 4 | 4 | 0 | 0 | 0 |
| 16 | Rate the sports (Indoor/Outdoor) facilities available and its maintenance (Related to Infrastructure and ambience of the institution)   | 5 | 3 | 0 | 0 | 0 |
| 17 | Rate the security and proctorial services in college for students. (Related to Infrastructure and ambience of the institution)  | 4 | 4 | 0 | 0 | 0 |
| 18 | Rate the resources and practices for conservation of energy, water, etc. in the campus (Related to Infrastructure and ambience of the institution)  | 4 | 4 | 0 | 0 | 0 |
| 19 | Rate the usage of modern teaching aids, Gadget, Smart class room and Web resources for content delivery (Related to Infrastructure and ambience of the institution)                           | 3 | 4 | 0 | 0 | 1 |
| 20 | Rate the consistent maintenance of green campus (Related to Infrastructure and ambience of the institution)   | 4 | 4 | 0 | 0 | 0 |



*B. Kalpana*  
**PRINCIPAL**  
PRINCE SHRI VENKATESHWARA  
ARTS AND SCIENCE COLLEGE  
GOWRIVAKKAM, CHENNAI-600 073





**PRINCE SHRI VENKATESWARA ARTS AND SCIENCE COLLEGE**

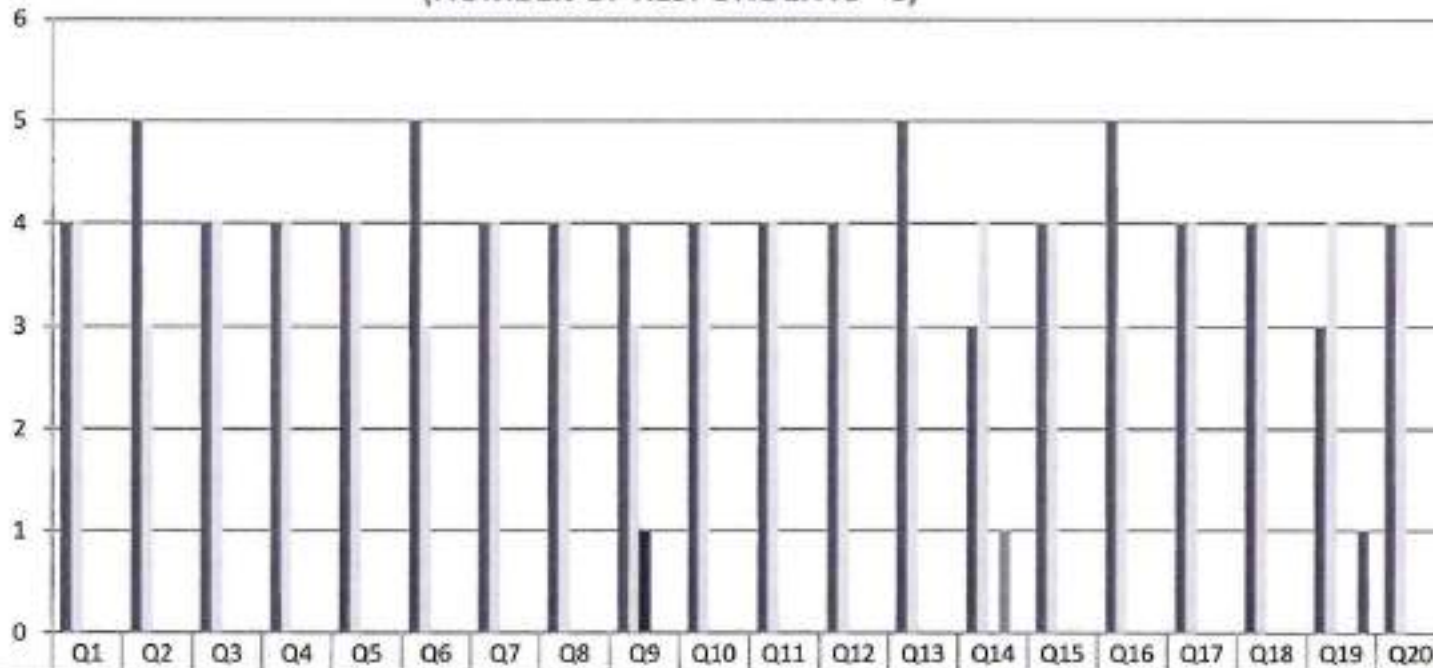
Gowrivakkam, Chennai-600073.

Affiliated to University of Madras

**STUDENT FEEDBACK ON CURRICULUM, INFRASTRUCTURE  
FACILITIES & AMBIENCE OF THE INSTITUTION - 2018-2019**

**M.Sc. COMPUTER SCIENCE**

(NUMBER OF RESPONDENTS - 8)



|                       | Q1 | Q2 | Q3 | Q4 | Q5 | Q6 | Q7 | Q8 | Q9 | Q10 | Q11 | Q12 | Q13 | Q14 | Q15 | Q16 | Q17 | Q18 | Q19 | Q20 |
|-----------------------|----|----|----|----|----|----|----|----|----|-----|-----|-----|-----|-----|-----|-----|-----|-----|-----|-----|
| Strongly Agree (5)    | 4  | 5  | 4  | 4  | 4  | 5  | 4  | 4  | 4  | 4   | 4   | 4   | 5   | 3   | 4   | 5   | 4   | 4   | 3   | 4   |
| Agree (4)             | 4  | 3  | 4  | 4  | 4  | 3  | 4  | 4  | 3  | 4   | 4   | 4   | 3   | 4   | 4   | 3   | 4   | 4   | 4   | 4   |
| Neutral (3)           | 0  | 0  | 0  | 0  | 0  | 0  | 0  | 0  | 1  | 0   | 0   | 0   | 0   | 0   | 0   | 0   | 0   | 0   | 0   | 0   |
| Disagree (2)          | 0  | 0  | 0  | 0  | 0  | 0  | 0  | 0  | 0  | 0   | 0   | 0   | 0   | 1   | 0   | 0   | 0   | 0   | 0   | 0   |
| Strongly Disagree (1) | 0  | 0  | 0  | 0  | 0  | 0  | 0  | 0  | 0  | 0   | 0   | 0   | 0   | 0   | 0   | 0   | 0   | 0   | 0   | 0   |



*B. Kalpana*

**PRINCIPAL**

PRINCE SHRI VENKATESHWARA  
ARTS AND SCIENCE COLLEGE  
GOWRIVAKKAM, CHENNAI-600073



**PRINCE SHRI VENKATESWARA ARTS AND SCIENCE COLLEGE**

Gowrivakkam, Chennai-600073.

Affiliated to University of Madras

**STUDENT FEEDBACK ON CURRICULUM, INFRASTRUCTURE FACILITIES & AMBIENCE OF THE INSTITUTION – ANALYSIS REPORT**

**Academic Year** 2018-19  
**Department** M.Sc. Biochemistry  
**Number of Respondents** 5

Feedback Rate: Strongly Agree (5), Agree (4), Neutral (3), Disagree (2), Strongly Disagree (1)

| S. No | Feedback on Curriculum, infrastructure facilities & ambience of the institution  | 5 | 4 | 3 | 2 | 1 |
|-------|--|---|---|---|---|---|
| 1     | Rate the courses in terms of their relevance to the latest and/ or future technologies and useful for employability (Related to Curriculum)                  | 2 | 3 | 0 | 0 | 0 |
| 2     | Rate the quality and relevance of the courses included in the curriculum (Related to Curriculum)   | 3 | 2 | 0 | 0 | 0 |
| 3     | Rate the opportunity for students to participate in internship, contest, field visit, IPT and conference (Related to Curriculum)                             | 2 | 3 | 0 | 0 | 0 |
| 4     | Rate the quality of teaching and teacher's approach in the entire program (Related to Curriculum)  | 2 | 3 | 0 | 0 | 0 |
| 5     | Rate the infrastructure of the classrooms for effective learning (Related to Curriculum)   | 2 | 3 | 0 | 0 | 0 |
| 6     | Rate the usage of teaching aids and ICT in the class by faculty to facilitate teaching (Related to Curriculum)   | 3 | 2 | 0 | 0 | 0 |
| 7     | Rate the opportunity for students to participate in extension activities (Related to Curriculum)   | 2 | 3 | 0 | 0 | 0 |
| 8     | Rate the opportunities provided to utilize Research facilities & assistance to prepare for Hackathons and other technical challenges (Related to Curriculum) | 2 | 3 | 0 | 0 | 0 |



## PRINCE SHRI VENKATESWARA ARTS AND SCIENCE COLLEGE

Gowriyalkam, Chennai-600073.

Affiliated to University of Madras

|    |   |   |   |   |   |   |
|----|---|---|---|---|---|---|
| 9  | Rate the way of Grievances/problems are redressed and resolved in time. (Related to Curriculum)   | 2 | 2 | 1 | 0 | 0 |
| 10 | Rate the functioning of Placement Cell in getting jobs and placements (Related to Curriculum)   | 2 | 3 | 0 | 0 | 0 |
| 11 | Rate the transparency of the evaluation system in the College and the internal evaluation process by the teachers (Related to Assessment)   | 2 | 3 | 0 | 0 | 0 |
| 12 | Rate the PSVASC contributions on Entrepreneurship Development (Related to Ambience)   | 2 | 3 | 0 | 0 | 0 |
| 13 | Rate the learning environment with adequate resources in Library (Related to Infrastructure)  | 3 | 2 | 0 | 0 | 0 |
| 14 | Rate the laboratories & other IT facilities are excellent for effective learning (Related to Infrastructure and ambience of the institution)  | 1 | 3 | 0 | 1 | 0 |
| 15 | Rate the infrastructure, cleanliness and other facilities in campus / canteen / common room / toilets / washrooms and maintenance (Related to Infrastructure and ambience of the institution) | 2 | 3 | 0 | 0 | 0 |
| 16 | Rate the sports (Indoor/Outdoor) facilities available and its maintenance (Related to Infrastructure and ambience of the institution)   | 3 | 2 | 0 | 0 | 0 |
| 17 | Rate the security and proctorial services in college for students. (Related to Infrastructure and ambience of the institution)  | 2 | 3 | 0 | 0 | 0 |
| 18 | Rate the resources and practices for conservation of energy, water, etc. in the campus (Related to Infrastructure and ambience of the institution)  | 2 | 3 | 0 | 0 | 0 |
| 19 | Rate the usage of modern teaching aids, Gadget, Smart class room and Web resources for content delivery (Related to Infrastructure and ambience of the institution)                           | 1 | 3 | 0 | 0 | 1 |
| 20 | Rate the consistent maintenance of green campus (Related to Infrastructure and ambience of the institution)   | 2 | 3 | 0 | 0 | 0 |



*B. Kalpana*  
**PRINCIPAL**  
PRINCE SHRI VENKATESHWARA  
ARTS AND SCIENCE COLLEGE  
GOWRIYALKAM, CHENNAI-600 073.



**PRINCE SHRI VENKATESWARA ARTS AND SCIENCE COLLEGE**

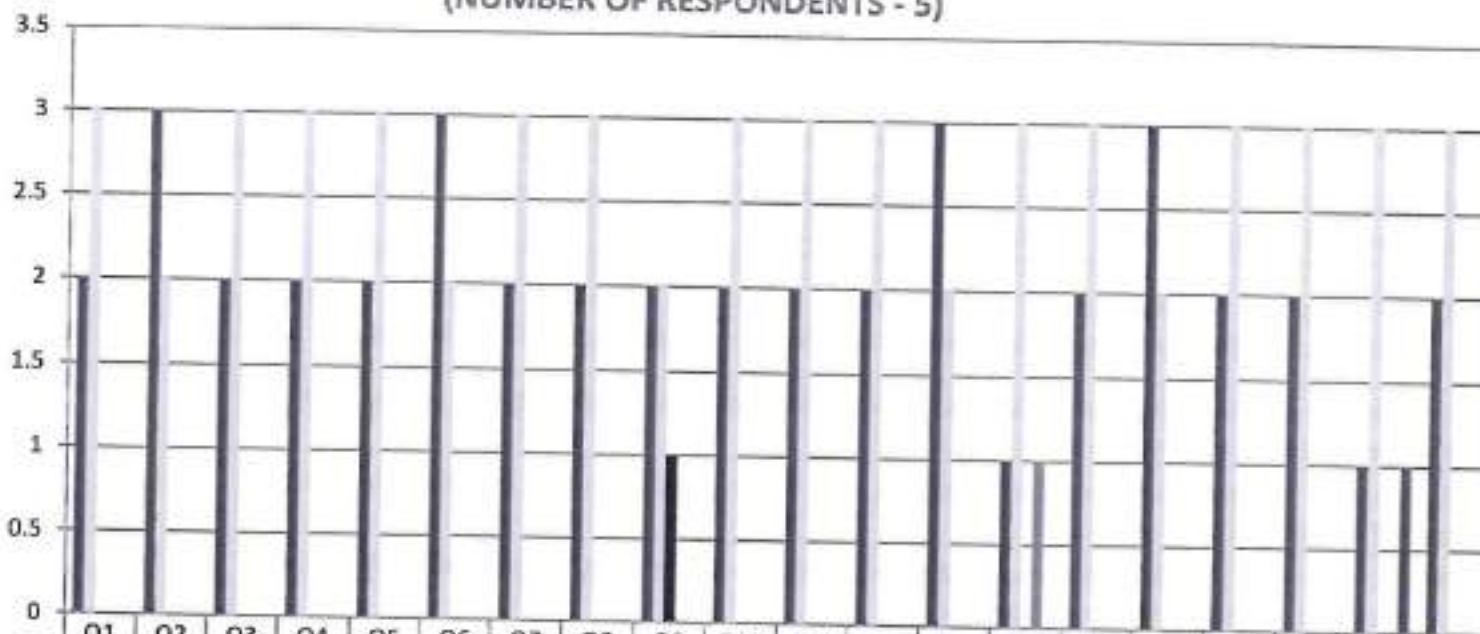
Gowrivaikam, Chennai-600073.

Affiliated to University of Madras

**STUDENT FEEDBACK ON CURRICULUM, INFRASTRUCTURE  
FACILITIES & AMBIENCE OF THE INSTITUTION - 2018-2019**

**M.Sc. BIOCHEMISTRY**

(NUMBER OF RESPONDENTS - 5)



|                       | Q1 | Q2 | Q3 | Q4 | Q5 | Q6 | Q7 | Q8 | Q9 | Q10 | Q11 | Q12 | Q13 | Q14 | Q15 | Q16 | Q17 | Q18 | Q19 | Q20 |
|-----------------------|----|----|----|----|----|----|----|----|----|-----|-----|-----|-----|-----|-----|-----|-----|-----|-----|-----|
| Strongly Agree (5)    | 2  | 3  | 2  | 2  | 2  | 3  | 2  | 2  | 2  | 2   | 2   | 2   | 3   | 1   | 2   | 3   | 2   | 2   | 1   | 2   |
| Agree (4)             | 3  | 2  | 3  | 3  | 3  | 2  | 3  | 3  | 2  | 3   | 3   | 3   | 2   | 3   | 3   | 2   | 3   | 3   | 3   | 3   |
| Neutral (3)           | 0  | 0  | 0  | 0  | 0  | 0  | 0  | 0  | 1  | 0   | 0   | 0   | 0   | 0   | 0   | 0   | 0   | 0   | 0   | 0   |
| Disagree (2)          | 0  | 0  | 0  | 0  | 0  | 0  | 0  | 0  | 0  | 0   | 0   | 0   | 0   | 1   | 0   | 0   | 0   | 0   | 0   | 0   |
| Strongly Disagree (1) | 0  | 0  | 0  | 0  | 0  | 0  | 0  | 0  | 0  | 0   | 0   | 0   | 0   | 0   | 0   | 0   | 0   | 0   | 1   | 0   |



*B. Kalpana*  
**PRINCIPAL**

**PRINCE SHRI VENKATESHWARA  
ARTS AND SCIENCE COLLEGE  
GOWRIVAİKAM, CHENNAI 600 073**



**PRINCE SHRI VENKATESWARA ARTS AND SCIENCE COLLEGE**

Gowrivakkam, Chennai-600073.

Affiliated to University of Madras.

**STUDENT FEEDBACK ON CURRICULUM, INFRASTRUCTURE FACILITIES & AMBIENCE OF THE INSTITUTION – ANALYSIS REPORT**

**Academic Year** 2018-19  
**Department** M.Sc. Biotechnology  
**Number of Respondents** 7

Feedback Rate: Strongly Agree (5), Agree (4), Neutral (3), Disagree (2), Strongly Disagree (1)

| S. No | Feedback on Curriculum, infrastructure facilities & ambience of the institution  | 5 | 4 | 3 | 2 | 1 |
|-------|--|---|---|---|---|---|
| 1     | Rate the courses in terms of their relevance to the latest and/ or future technologies and useful for employability (Related to Curriculum)                  | 3 | 4 | 0 | 0 | 0 |
| 2     | Rate the quality and relevance of the courses included in the curriculum (Related to Curriculum)   | 3 | 4 | 0 | 0 | 0 |
| 3     | Rate the opportunity for students to participate in internship, contest, field visit, IPT and conference (Related to Curriculum)                             | 4 | 3 | 0 | 0 | 0 |
| 4     | Rate the quality of teaching and teacher's approach in the entire program (Related to Curriculum)  | 4 | 3 | 0 | 0 | 0 |
| 5     | Rate the infrastructure of the classrooms for effective learning (Related to Curriculum)   | 4 | 3 | 0 | 0 | 0 |
| 6     | Rate the usage of teaching aids and ICT in the class by faculty to facilitate teaching (Related to Curriculum)   | 3 | 4 | 0 | 0 | 0 |
| 7     | Rate the opportunity for students to participate in extension activities (Related to Curriculum)   | 3 | 3 | 1 | 0 | 0 |
| 8     | Rate the opportunities provided to utilize Research facilities & assistance to prepare for Hackathons and other technical challenges (Related to Curriculum) | 4 | 3 | 0 | 0 | 0 |



## PRINCE SHRI VENKATESWARA ARTS AND SCIENCE COLLEGE

Gowrivaikam, Chennai-600073.

Affiliated to University of Madras

|    |   |   |   |   |   |   |
|----|---|---|---|---|---|---|
| 9  | Rate the way of Grievances/problems are redressed and resolved in time. (Related to Curriculum)   | 4 | 3 | 0 | 0 | 0 |
| 10 | Rate the functioning of Placement Cell in getting jobs and placements (Related to Curriculum)   | 3 | 4 | 0 | 0 | 0 |
| 11 | Rate the transparency of the evaluation system in the College and the internal evaluation process by the teachers (Related to Assessment)   | 4 | 3 | 0 | 0 | 0 |
| 12 | Rate the PSVASC contributions on Entrepreneurship Development (Related to Ambience)   | 4 | 3 | 0 | 0 | 0 |
| 13 | Rate the learning environment with adequate resources in Library (Related to Infrastructure)  | 3 | 4 | 0 | 0 | 0 |
| 14 | Rate the laboratories & other IT facilities are excellent for effective learning (Related to Infrastructure and ambience of the institution)  | 3 | 4 | 0 | 0 | 0 |
| 15 | Rate the infrastructure, cleanliness and other facilities in campus / canteen / common room / toilets / washrooms and maintenance (Related to Infrastructure and ambience of the institution) | 3 | 4 | 0 | 0 | 0 |
| 16 | Rate the sports (Indoor/Outdoor) facilities available and its maintenance (Related to Infrastructure and ambience of the institution)   | 4 | 3 | 0 | 0 | 0 |
| 17 | Rate the security and proctorial services in college for students. (Related to Infrastructure and ambience of the institution)  | 4 | 2 | 1 | 0 | 0 |
| 18 | Rate the resources and practices for conservation of energy, water, etc. in the campus (Related to Infrastructure and ambience of the institution)  | 4 | 3 | 0 | 0 | 0 |
| 19 | Rate the usage of modern teaching aids, Gadget, Smart class room and Web resources for content delivery (Related to Infrastructure and ambience of the institution)                           | 4 | 3 | 0 | 0 | 0 |
| 20 | Rate the consistent maintenance of green campus (Related to Infrastructure and ambience of the institution)   | 4 | 2 | 1 | 0 | 0 |

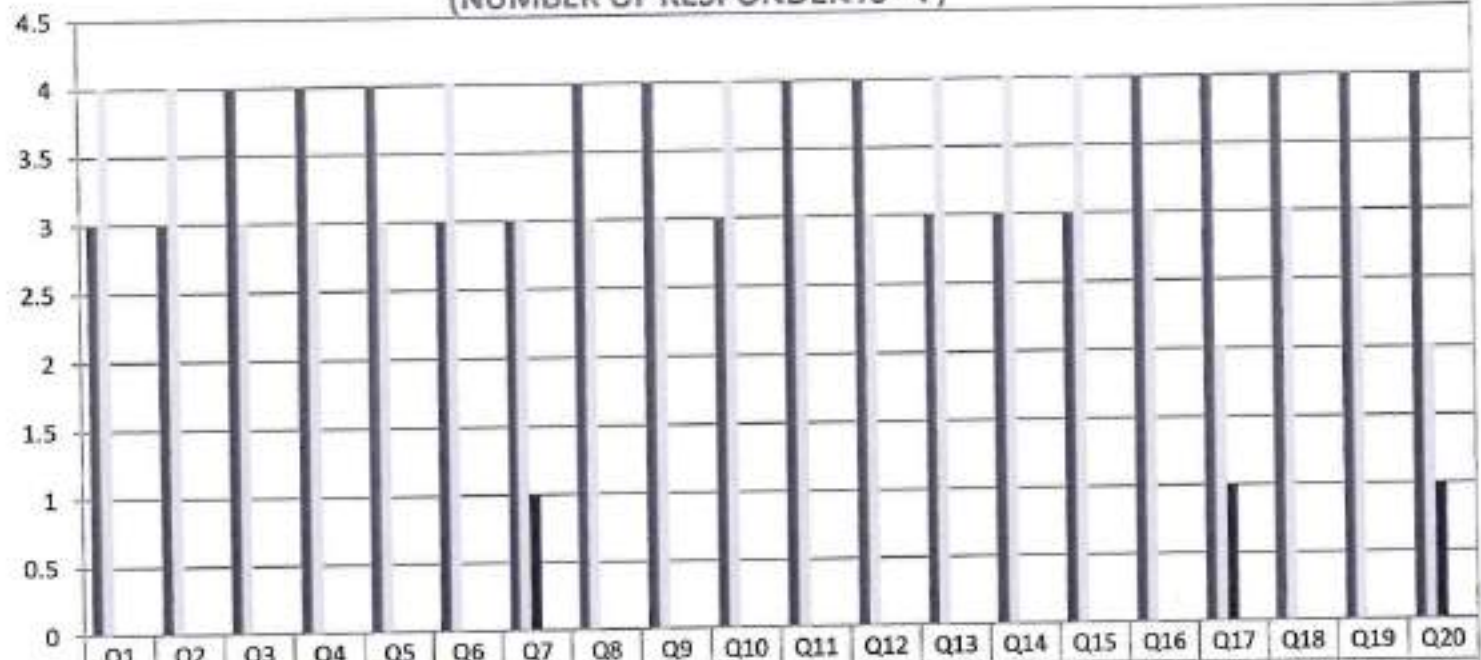


*B. Kalpana*  
**PRINCIPAL**  
PRINCE SHRI VENKATESHWARA  
ARTS AND SCIENCE COLLEGE  
GOWRIVAKKAM, CHENNAI-600 073.



**PRINCE SHRI VENKATESWARA ARTS AND SCIENCE COLLEGE**  
 Gowrivakkam, Chennai-600073.  
 Affiliated to University of Madras

**STUDENT FEEDBACK ON CURRICULUM, INFRASTRUCTURE  
 FACILITIES & AMBIENCE OF THE INSTITUTION - 2018-2019**  
**M.Sc. BIOTECHNOLOGY**  
 (NUMBER OF RESPONDENTS - 7)



|                       | Q1 | Q2 | Q3 | Q4 | Q5 | Q6 | Q7 | Q8 | Q9 | Q10 | Q11 | Q12 | Q13 | Q14 | Q15 | Q16 | Q17 | Q18 | Q19 | Q20 |
|-----------------------|----|----|----|----|----|----|----|----|----|-----|-----|-----|-----|-----|-----|-----|-----|-----|-----|-----|
| Strongly Agree (5)    | 3  | 3  | 4  | 4  | 4  | 3  | 3  | 4  | 4  | 3   | 4   | 4   | 3   | 3   | 3   | 4   | 4   | 4   | 4   | 4   |
| Agree (4)             | 4  | 4  | 3  | 3  | 3  | 4  | 3  | 3  | 3  | 4   | 3   | 3   | 4   | 4   | 4   | 3   | 2   | 3   | 3   | 2   |
| Neutral (3)           | 0  | 0  | 0  | 0  | 0  | 0  | 1  | 0  | 0  | 0   | 0   | 0   | 0   | 0   | 0   | 0   | 1   | 0   | 0   | 1   |
| Disagree (2)          | 0  | 0  | 0  | 0  | 0  | 0  | 0  | 0  | 0  | 0   | 0   | 0   | 0   | 0   | 0   | 0   | 0   | 0   | 0   | 0   |
| Strongly Disagree (1) | 0  | 0  | 0  | 0  | 0  | 0  | 0  | 0  | 0  | 0   | 0   | 0   | 0   | 0   | 0   | 0   | 0   | 0   | 0   | 0   |



*B. Kalpana*  
**PRINCIPAL**  
 PRINCE SHRI VENKATESHWARA  
 ARTS AND SCIENCE COLLEGE  
 GOWRIVAKKAM, CHENNAI-600 073.